

TO: Kristina Doan, ISBE
Ann Freiburg, IDHS
Colleen Cunningham, IDHS
Jennifer Grissom, IDHS
All CFC Managers
Andria Goss, Cook County DCFS
Davette Clark-Johnson, CPS
Kelsey Badger, Erikson Institute's DCFS Intact Program
Allison Lowe-Fotos, Ounce of Prevention Fund
Carmen Garcia, Ounce of Prevention Fund
Karen Berman, Ounce of Prevention Fund
Kayla Goldfarb, Ounce of Prevention Fund

DATE: September 11, 2020

RE: FY 2020 Year End Developmental Screening Report

Enclosed within are Child Find developmental screening reports and maps reflecting the number of children reported as screened from July 1, 2019 through June 30, 2020 throughout the State of Illinois. Please note that IDHS County Health Department (CHD) data is *not* included. When available, it will be located at <http://www.dhs.state.il.us/page.aspx?item=33422>. We hope to reintegrate this data going forward.

TABLE OF CONTENTS

Narrative	2
Sample Form	4
Directions for Completing Form	5
Data Mappings	8
Screenings Reported by ZIP Code	14
Screenings Reported by Month	30
Screenings Reported by Agencies Represented	40
Screenings Reported by Screening Tool Utilized	45

This report, as well as reports reflecting prior years, is made publicly available on our website at <https://www.childfind-idea-il.us/Screening.aspx>. If you have any questions or concerns about the enclosed information, please feel free to reach out via the contact form on our website at <https://www.childfind-idea-il.us/Contact.aspx> or call (800) 851-6197, option 2.

Best Regards,



Denise Stricklin
Child Find Project Coordinator

Child Find Project Data Collection Mappings

Background

Since 1998, the Illinois State Board of Education (ISBE) has operated the Child Find Project (Child Find), funded through Individuals with Disabilities Education Act Part B, Preschool Discretionary funds to develop and disseminate public awareness materials to Local Education Agencies (LEAs), Special Education Cooperatives, and the Child and Family Connections (CFC) offices.

The Child Find Project, managed by a single Program Coordinator, collects data on the number and location of developmental screenings taking place across Illinois for children between 0 to 5 years of age. A developmental screening is the use of screening tools to track the development of young children across multiple domains. Child Find receives:

- Data from the 25 CFC sites across Illinois. CFCs are the system point of entry for Early Intervention under the Illinois Department of Human Services (IDHS), and are required to report data to Child Find. CFCs receive data from local school districts, with the exception of Chicago Public School (CPS) District #299, where data is reported directly to Child Find.
- Quarterly data on screenings from all health departments reporting to IDHS, which is obtained from the Cornerstone data entry system (Cornerstone).
- Department of Children and Family Services (DCFS) Cook County for children birth to five who are in care. These screenings are conducted by Erikson Institute (Erikson) /DCFS Early Childhood developmental specialists or by the DCFS Integrated Assessment program.
- Monthly data from Erikson/ DCFS Early Childhood Intact Program for Cook, Northern, Central and Southern regions. Erikson/DCFS Early Childhood developmental specialists administer developmental screenings to children ages birth through three entering the foster care system in Cook County and coordinates assessments statewide. The data is not separated by zip codes but reported by the four DCFS regions.

Through the support of the Early Learning Council, the *0-5 Child Find Screening Data Collection Form* (Data Collection Form) used by reporting entities was updated in 2016 in an effort to gather improved information on referral counts, screening tools used, type of reporting program/entity and the type of referral. Among these improvements, a new field was added to include the zip code of locations performing developmental screenings. The inclusion of this field allows for the mapping of portrays where screenings occur, identify potential gaps in reporting and referrals and make the data useful for stakeholders.

Mappings

Child Find has partnered with the Illinois Early Childhood Asset Map (IECAM) to display, through geo-mapping, where developmental screenings are occurring as reported on the Data Collection Form. Developed in 2006, IECAM is funded by ISBE and the IDHS to provide information on existing services, the demographics of young children and their families, and state resources that serve young children. Child Find provides quarterly reports to IECAM which in turn provides mappings on 0-5 Child Find Screenings:

- Total Screened by CFC region
- Total Referred by CFC region

- Total Screened by Zip Code
- Total Referred by Zip Code

Limitations and exclusions

There is no data system to support unduplicated, disaggregated child level data collection, but the addition of the zip code field draws a broader picture of screenings occurring in the state. Even with the stated improvements to the Data Collection Form, limitations remain:

- Reporting to CFCs is voluntary and reporting entities include: school districts, Local Education Agencies (LEAs), Special Education Cooperatives, Regional Offices of Education, child care providers, Head Start/Early Head Start, Home Visiting programs, Early Intervention providers, health departments, health care providers, DCFS, IDHS Family Case Management, multi-funded programs, and Women, Infants and Children.
- CFCs 8, 9, 10 and 11 serve the City of Chicago but do not conduct screening events – Chicago Public Schools (CPS) #299 coordinates all screenings in these regions. It is up to CPS to report the screenings conducted, and data is not broken down by CFC region or even zip code.
- Reporting entities submit data manually through paper forms. CFCs vary greatly in the frequency and method of reporting data to Child find: Some CFCs email forms to the Project Coordinator as forms are received and other CFCs collect forms throughout a quarter before submitting them all at once via US Mail or fax.
- Delayed reporting from entities to CFCs impacts the timeliness of data to Child Find. CFCs do not all report information to Child Find in regular intervals.
- Data collection is time consuming and complex for both reporting entities and CFCs. Data is often inconsistent and unreliable because not all relevant fields are completed and mathematical miscalculations are recorded in fields. As of May 1, 2018, Child Find is piloting an electronic data collection system with two CFCs. This system would notify reporting entities when a mistake has been entered, prompting a correction before data submission is allowed.
- IDHS does not report data on developmental screenings by zip code. Rather, quarterly Cornerstone data is reported to Child Find in an aggregate format. This constitutes a significant sector of data that cannot be mapped.
- The data is not available in real-time but delayed by at least one quarter.
- The zip code on the Data Collection Form refers to where the screening occurred, not necessarily the home zip code of the children receiving the screening.

Even with limitations, the mappings make the data transparent and provides utility for stakeholders as a quality improvement process. As state agencies, programs, and communities continue to employ developmental screenings as a tool to support children’s development and school readiness, these mappings visually display areas in the state that might be underreporting screenings and need additional supports to increase screenings and referrals. Further, the wide dissemination of the mappings raise awareness of Child Find which may lead to better reporting by both entities and CFCs. Additional fields were added to the Data Collection Form beyond the zip code and future mappings are possible in the future.

**0-5 CHILD FIND
SCREENING DATA COLLECTION FORM**

Please refer to the directions when completing this form.

SECTION I: IDENTIFYING INFORMATION

Current Date: _____		Month/Year of Screenings: _____		CFC Submitting Form: _____	
Name of Screening Agency: _____					
Type of Program/Entity ¹ : _____			Zip Code of Locations of Screenings: _____		
Screening Tool(s) used: _____					
Contact Person's Name: _____			Phone Number: _____		
Email Address: _____					

If the screening was part of a shared screening event, please check the following box:

SECTION II: SCREENING INFORMATION

Report Totals								
Total Children Screened	Age 0-11 months	Age 12-23 months	Age 24-35 months	Age 36-47 months	Age 48-60 months	Age 61+ months	Not Referred	Total Referred

Screenings of Children involved with DCFS		
# of Children in Intact Family Services Screened	# of Children of Teen Wards Screened	# of Children in Foster Care Screened

SECTION III: SCREENING RESULTS – REFERRAL COUNTS²

Report Totals for Children Ages 0 – 35 Months								
# Referred to EI	# Referred to LEA (ECSE)	# Referred to EHS	# Referred to PI (center-based)	# Referred to Child Care Program	# Referred to HV	# Referred to Other Services	# Referred to Multiple Services	# Referred for Rescreening

Report Totals for Children Ages 36 – 60 Months							
# Referred to LEA (ECSE)	# Referred to PFA	# Referred to HS	# Referred to Child Care Program	# Referred to HV	# Referred to Other Services	# Referred to Multiple Services	# Referred for Rescreening

Please fax or email completed form(s) by _____ (*insert timeframe*) to your local Child and Family Connections (CFC) office at the following contact information: _____.

You may find your local CFC office by going to the Illinois Department of Human Services office locator at www.dhs.state.il.us. If you have questions regarding this form, please contact the Child Find Project at 1-800-851-6197.

¹ Child Care Provider (CC), Head Start/Early Head Start (HS/EHS), Home Visiting (HV), Multi-Funded Program (MFP), Child and Family Connections (CFC), School District or Local Education Agency (LEA), Early Intervention (EI) Provider, Health Department (HD), Health Care Provider (HC), Women, Infants and Children (WIC), Illinois Department of Children and Family Services (DCFS) or Family Case Management (FCM).

² The following are abbreviations used in SECTION III: EI = Early Intervention; EHS = Early Head Start; PI = Prevention Initiative; HV = Home Visiting; PFA = Preschool for All; and HS = Head Start.

DIRECTIONS FOR COMPLETING 0-5 CHILD FIND SCREENING, REPORTING AND DATA COLLECTION FORM

The Illinois State Board of Education (ISBE) operates the Child Find Project (the “Project”). The Project is funded through IDEA Part B, Preschool Discretionary funds to develop and disseminate public awareness materials to Local Education Agencies (LEAs), Special Education Cooperatives, and the Child and Family Connections (CFC) offices. One activity of the Project is to collect data on the number and location of developmental screenings taking place across the State of Illinois for children between 0 and 5 years of age. The purpose of the 0-5 Child Find Screening, Reporting and Data Collection Form (the “Form”) is the collection of said data by the Project. If your program administers developmental screenings, you should report screening data to the Project using the Form. This applies to developmental screenings only and not to other types of screenings, such as those for vision or hearing. Agencies are required to complete each section of the Form.

The following are certain definitions that may be useful when completing the Form:

Health Department – A certified public health department of a county or the City of Chicago that strives to meet the public health needs of its jurisdiction.

Health Care Provider – A primary care physician, clinic, etc.

Home Visiting – A voluntary program serving pregnant women and children up to the age of 5 that promotes positive parenting practices and builds healthy parent-child relationships, which makes them an essential strategy for reducing child abuse and neglect, improving health outcomes for mothers and children, and increasing school readiness. Home visiting services use evidence-based, intensive, outcome-driven models that promote parent-child attachment; provide developmental screening, monitoring, and referrals; and provide linkages to community resources and services. Additional information pertaining to home visiting in Illinois can be found at <http://www.igrowillinois.org/>.

Multi-Funded Program – A program receiving separate funds from two or more program funding streams that are integrated or blended in order to pay for total program expenditures.

SECTION I: IDENTIFYING INFORMATION

This information allows the tracking of locations of screenings that occur, what programs or entities are involved in screenings, at what frequency screenings occur in a particular area, and who participates in screening activities.

Current Date – Insert the date the screening form is completed.

Month/Year of Screening – For cumulative reporting, insert the month and year the screenings took place.

CFC Submitting Form – CFCs should insert their CFC #, if a CFC is submitting a completed form.

Name of Screening Agency – Insert the name of the agency or provider undertaking the screening. Please note that such an agency or provider may include, but is not limited to, the following: Child Care Provider (CC); Head Start/Early Head Start (HS/EHS); Home Visiting (HV); Multi-Funded Program (MFP); Child and Family Connections (CFC); School District or Local Education Agency (LEA); Early Intervention (EI) Provider; Health Department (HD); Health Care Provider (HC); Women, Infants and

Children (WIC); Illinois Department of Children and Family Services (DCFS); or Family Case Management (FCM).

This information is gathered for data collection purposes only. If the screening is a joint effort between two or more CFCs or two or more school districts, indicate all CFCs and school districts involved in the joint effort, in order to show the area in which screenings are taking place. If a joint screening takes place with a CFC and a school district, the screenings will be attributed to the CFC or school district based on the ages of the children screened. Separate reports may be submitted if easier on reporting entities.

Type of Program/Entity – Insert the type of program or entity that describes the Screening Agency. Options include the following: Child Care Provider (CC); Head Start/Early Head Start (HS/EHS); Home Visiting (HV); Multi-Funded Program (MFP); Child and Family Connections (CFC); School District or Local Education Agency (LEA); Early Intervention (EI) Provider; Health Department (HD); Health Care Provider (HC); Women, Infants and Children (WIC); Illinois Department of Children and Family Services (DCFS); or Family Case Management (FCM).

Zip Code of the Locations of Screenings – Identify the zip code of the location of the screening event. One form should be submitted per event, as such, only one zip code should be entered here.

Screening Tool – Identify name of Developmental Screening tool(s) administered (e.g., ASQ3, ASQ-SE, DIAL, Brigance, other) by listing all that apply on the Form. Do not include other screenings performed such as Vision, Hearing, etc.

Contact Person (Name, Phone Number and Email Address) – Insert the name, telephone number and email address of the individual in charge of the screening session.

Name of Agency – List agency(ies) or individual provider(s) conducting the screening activity(ies), if screening event is community-wide or a joint-effort.

SECTION II: SCREENING INFORMATION

This information allows the tracking of the number of children screened and their age at the time of screening. Please note that the data for Section II refers to the total number of children screened (and is not separated out by zip codes as in Section I above).

Total Children Screened – Total number of children screened during event of cumulative monthly report.

Age 0-61+ Months – In the appropriate box, indicate the number of children by age who were screened.

Not Referred – Children who were screened but no referral was needed.

Total Referred – Children who were screened and a referral was needed.

The “Total Children Screened” count in Section II of the Form should equal the number of children referred *plus* the number of children not referred.

For purposes of the Form, a **Referral** occurs when a provider completes a screening and provides

information on how to connect families to a service provider that can meet the child and family's needs as indicated on the screening. Guidance on *referring families* may be found at the websites for (i) ExceleRate Illinois (including, the following link: <http://www.excelerateillinoisproviders.com/docman/resources/91-three-steps-to-screening/file>) and (ii) U.S. Department of Health and Family Services—Office of Administration for Children and Families for *Birth to 5: Watch Me Thrive!* (including, the following link: https://www.acf.hhs.gov/sites/default/files/ece/ece_providers_guide_march2014.pdf)

For purposes of data related to the screenings of children involved with DCFS (which is collected in the second table in Section II), please note the following:

of Children in Intact Family Services Screened – refers to the number of children screened who are involved with DCFS but are not in DCFS protective custody and are residing with their families as part of DCFS's Intact Families program.

of Children of Teen Wards Screened – refers to the number of children screened whose parents are wards of DCFS.

of Children in Foster Care Screened – refers to the number of children screened who are in DCFS care and residing with a foster family.

SECTION III: SCREENING RESULTS – REFERRAL COUNTS

The information submitted here allows the tracking of referrals made for children ages 0-35 months and 36-50 months.

Indicate the number of children referred for further evaluation in the appropriate referral count box identified. If a referral type is not listed, please indicate the name of the agency(ies) receiving referral(s) and the number of children involved. Please note that the numbers used in Section III will overlap and will not always match-up to the number used in the category of "Total Referred" in Section II above.

Referred to Other Services – Indicate the number of children referred to community based programs/agencies (i.e., speech, hearing, vision).

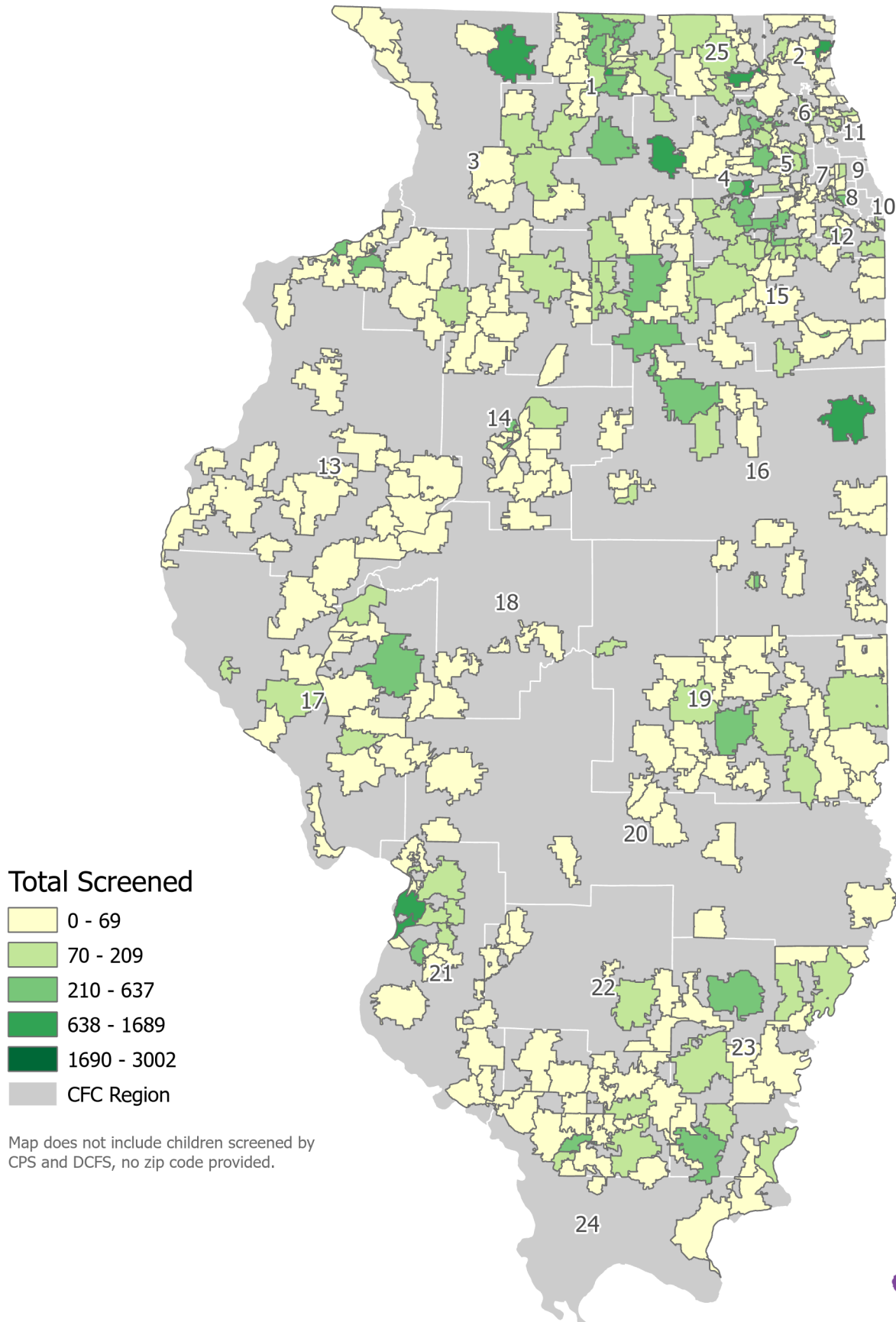
Referred for Rescreening – Indicate the number of children who did not score a concern on the screening, but are determined to benefit from a repeat screening at a later date (due to parent report of functioning variance, unable to screen, other concerns screener may have, etc.).

Referred to Multiple Services – If more than one of the other categories in this Section III has been checked, then also check "Referred for Multiple Services". *Please note that some children may be referred to multiple services and we want to know how many children present like that.*

Please **fax or email** completed reports to the local Child and Family Connections (CFC) office, attention Local Interagency Council (LIC) Coordinator. The LIC Coordinator is responsible for collecting all 0-5 Screening Collection forms relating to screening activities for children 0-5 years of age occurring in the service area. These reports are forwarded monthly to the State's Child Find Project Coordinator for statewide analysis and data compilation.

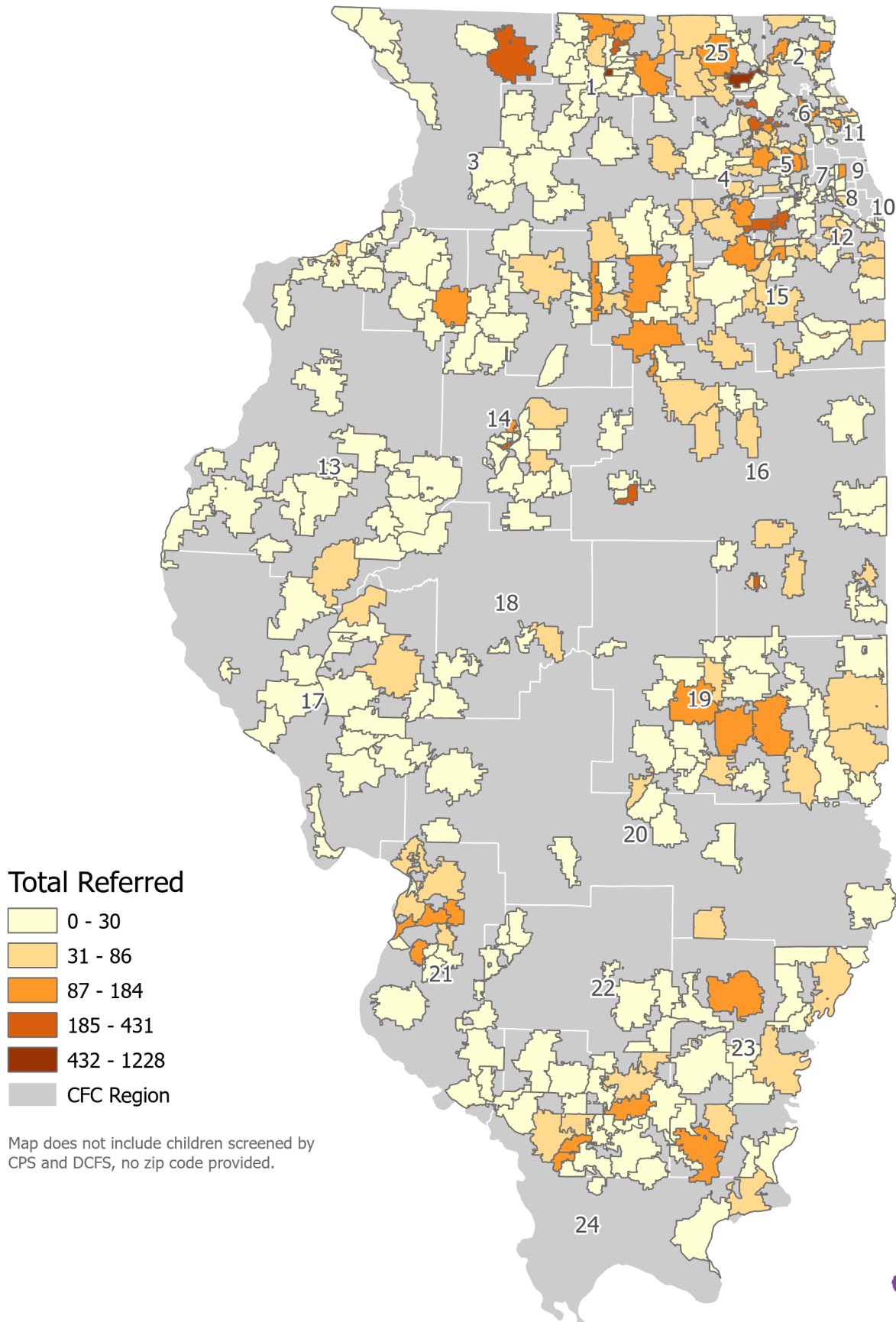
Child Find Screening FY2020

Total children birth to 5 years old screened, zip code



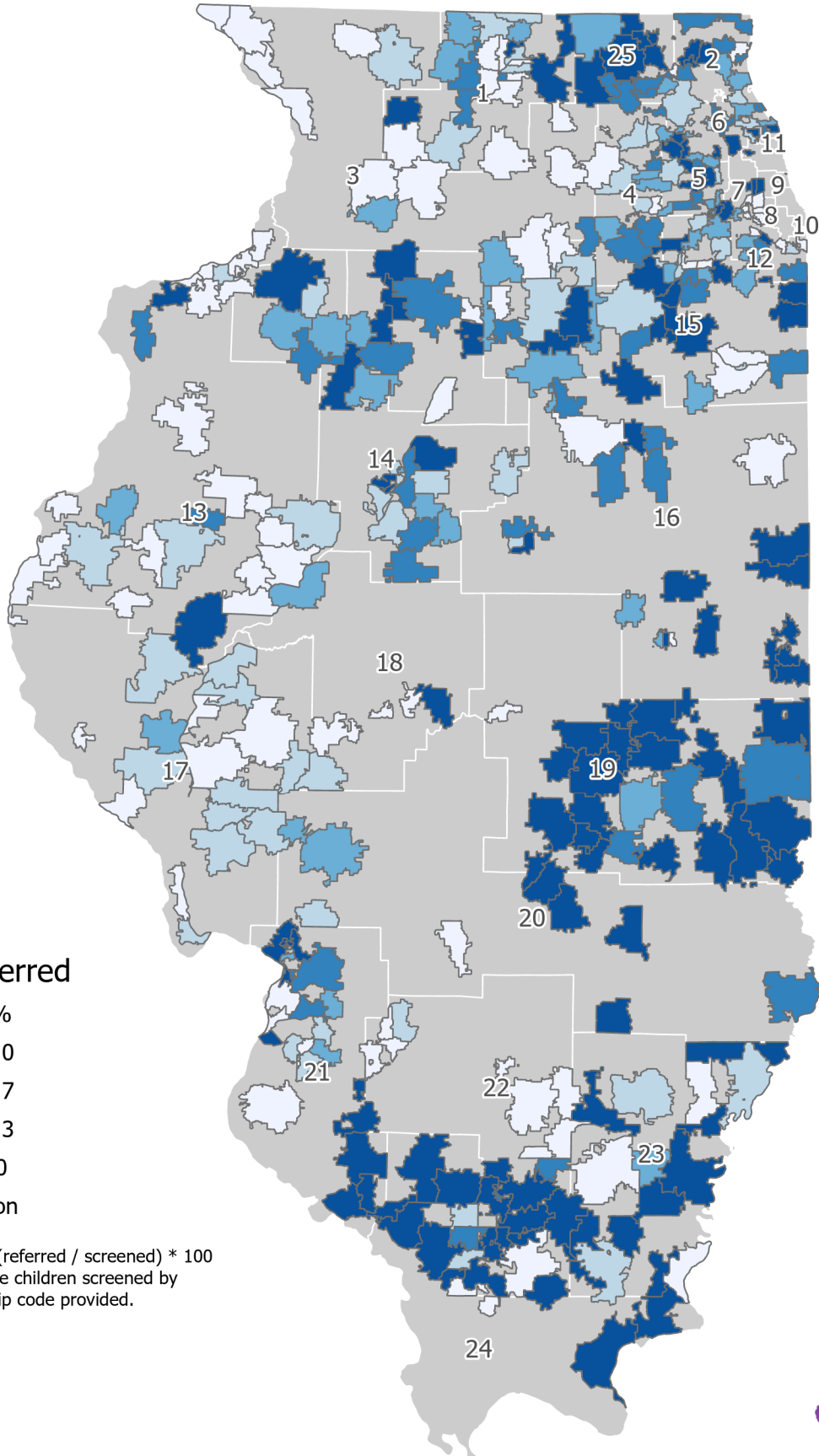
Child Find Screening FY2020

Total children birth to 5 years old referred, zip code



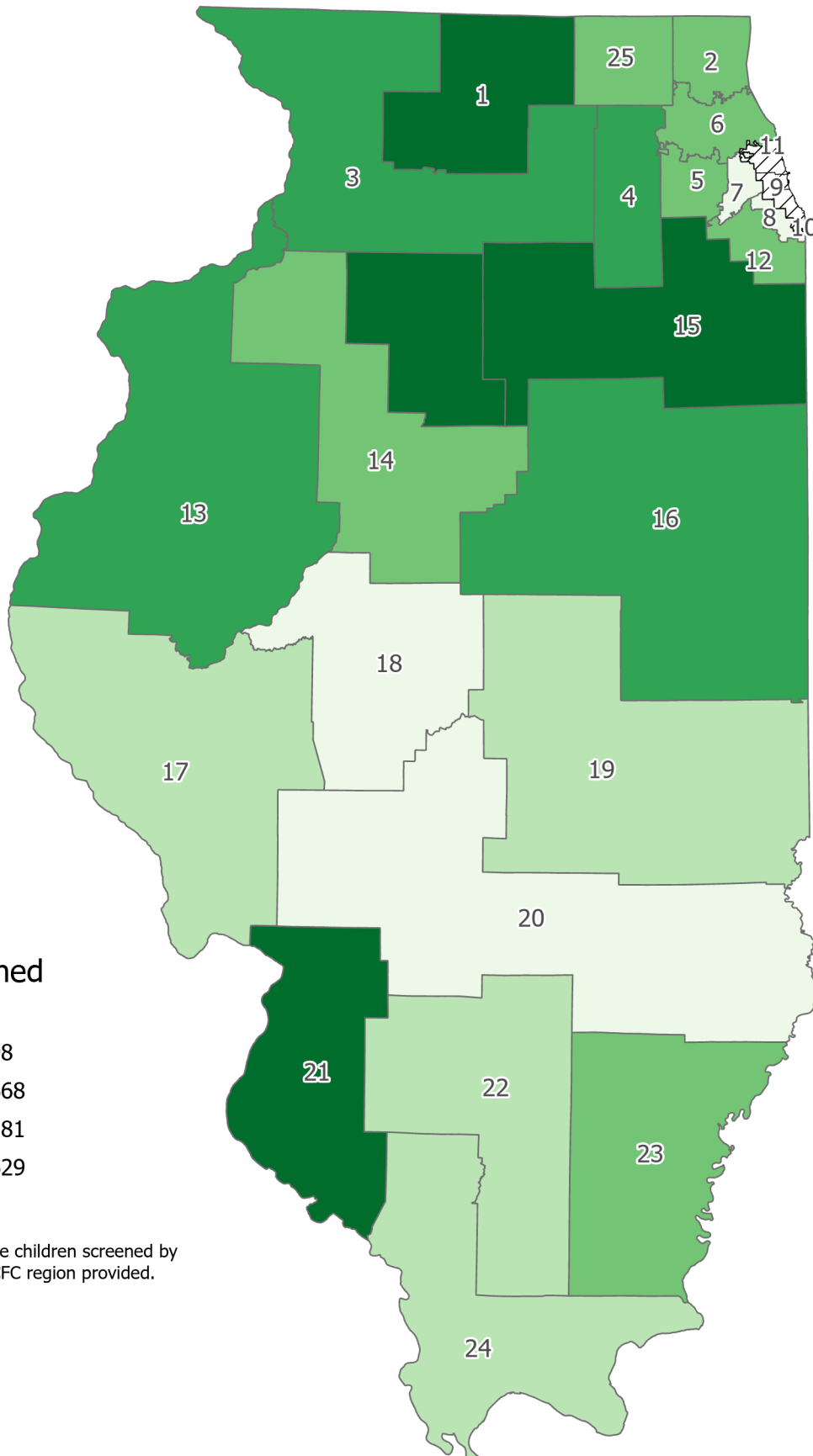
Child Find Screening FY2020

Percent children referred, zip code



Child Find Screening FY2020

Total children birth to 5 screened, CFC region



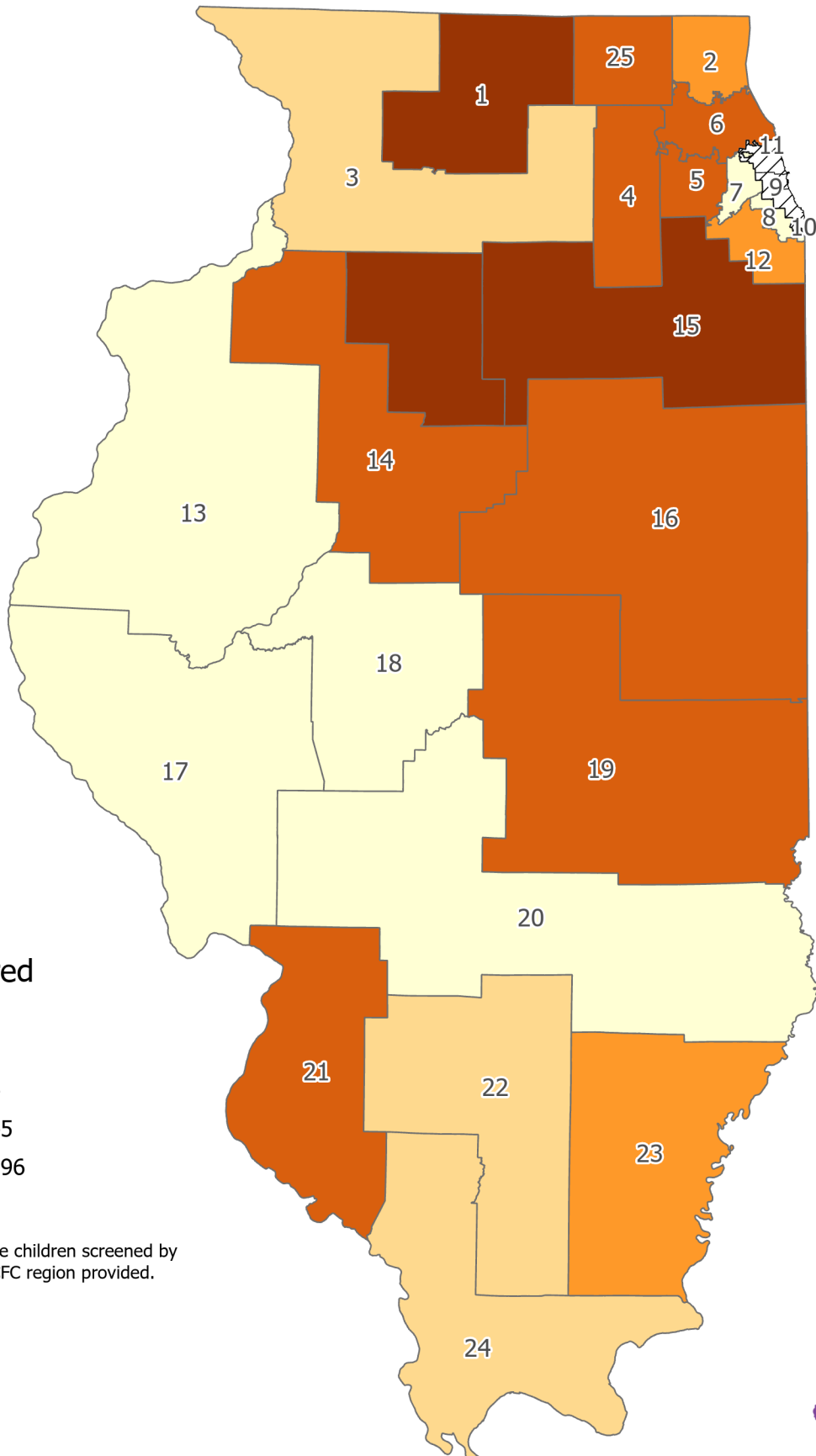
Total Screened

- 0 - 163
- 164 - 1198
- 1199 - 1668
- 1669 - 3181
- 3182 - 4629
- no data

Map does not include children screened by CPS and DCFS, no CFC region provided.

Child Find Screening FY2020

Total children birth to 5 referred, CFC region



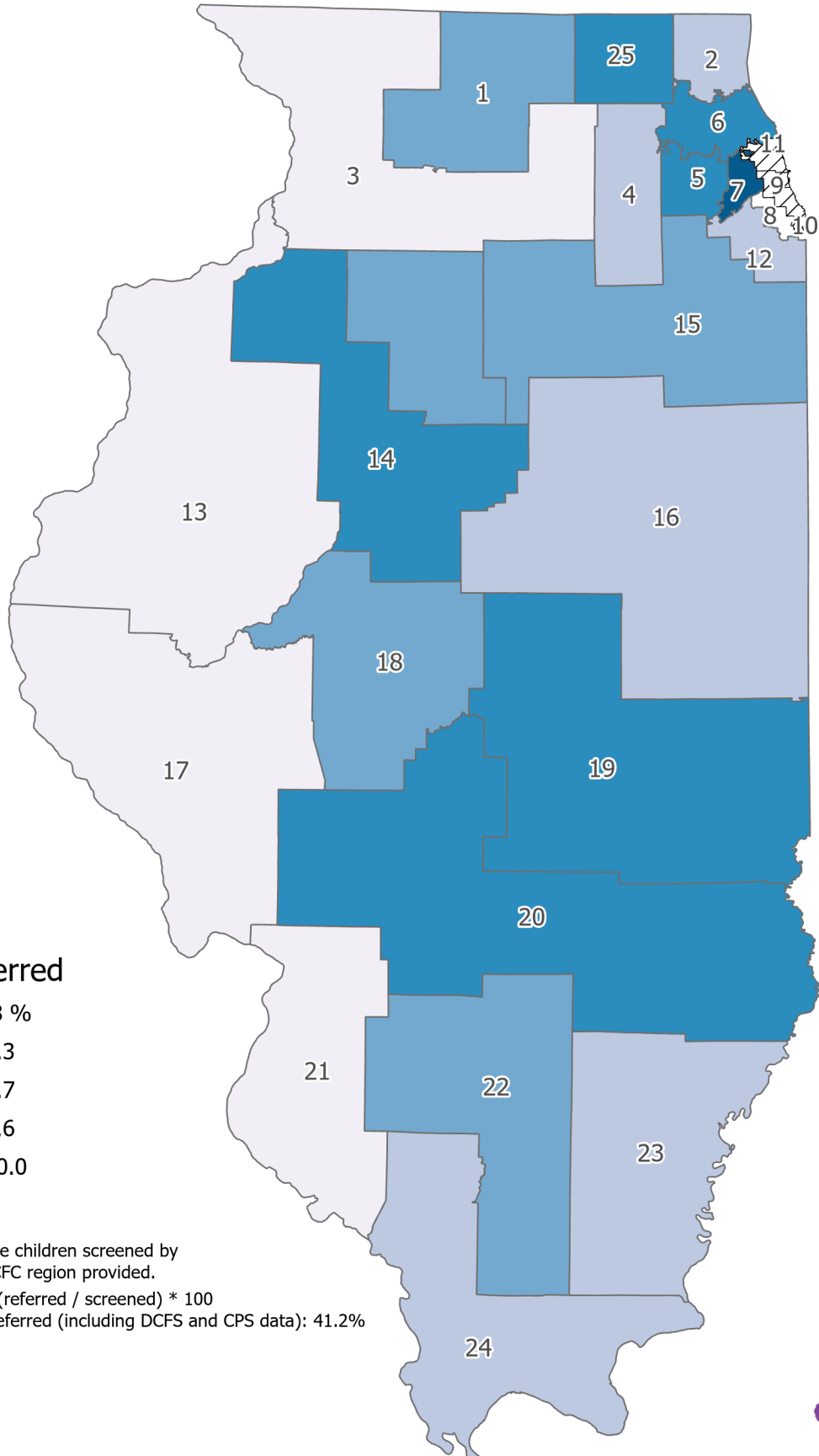
Total Referred

- 0 - 169
- 170 - 402
- 403 - 624
- 625 - 1345
- 1346 - 2396
- no data

Map does not include children screened by CPS and DCFS, no CFC region provided.

Child Find Screening FY2020

Percent children referred, CFC region



Percent referred

- 7.1 - 20.8 %
- 20.9 - 42.3
- 42.4 - 53.7
- 53.8 - 74.6
- 74.7 - 100.0
- no data

Map does not include children screened by CPS and DCFS, no CFC region provided.

Percent Referred = (referred / screened) * 100

Statewide percent referred (including DCFS and CPS data): 41.2%

Screenings Reported by CFC/CPS/DCFS and ZIP / FY2020 Year End

Zip Code	Total Screened	Ages (in Months)						Not Referred	Total Referred	Screenings of Children involved with DCFS			# of Children Ages 0 to 3 Referred to								# of Children Ages 3 to 5 Referred to					Sub-Totals						
		0-11	12-23	24-35	36-47	48-60	61+			In Intact Family Services	Children of Teen Wards	In Foster Care	EI	LEA (ECSE)	EHS	PI (center-based)	Child Care Program	HV	Other Services	Multiple Services	Rescreening	LEA (ECSE)	PFA	HS	Child Care Program	Other HV Services	Multiple Services	Rescreening	Ages 0-35 mos.	Ages 36-61+ mos.		
61310	0	0	0	0	0	0	0	0	0	0	0	0	0	0	0	0	0	0	0	0	0	0	0	0	0	0	0	0	0	0	0	0
61314	1	0	1	0	0	0	0	0	1	0	0	0	0	0	0	0	1	0	0	0	0	0	0	0	0	0	0	0	1	0	0	
61325	0	0	0	0	0	0	0	0	0	0	0	0	0	0	0	0	0	0	0	0	0	0	0	0	0	0	0	0	0	0	0	
61326	23	0	0	0	16	7	0	0	23	0	0	0	0	0	0	0	0	0	0	0	0	21	0	0	0	1	0	1	0	23	0	
61345	11	0	1	1	4	4	1	6	5	0	0	0	0	0	0	2	0	0	0	0	0	0	0	0	2	0	1	2	9	0		
61348	0	0	0	0	0	0	0	0	0	0	0	0	0	0	0	0	0	0	0	0	0	0	0	0	0	0	0	0	0	0	0	
61350	0	0	0	0	0	0	0	0	0	0	0	0	0	0	0	0	0	0	0	0	0	0	0	0	0	0	0	0	0	0	0	
61354	5	0	0	0	3	2	0	2	3	0	0	0	0	0	0	0	0	0	0	0	0	2	0	0	0	0	0	1	0	5	0	
61356	99	2	15	26	29	27	0	16	83	1	0	1	1	0	0	0	16	11	0	0	0	55	0	0	0	0	0	0	43	56	0	
61362	9	0	0	0	6	3	0	9	0	0	0	0	0	0	0	0	0	0	0	0	0	0	0	0	0	0	0	0	0	9	0	
61376	2	1	1	0	0	0	0	0	2	0	0	0	0	0	0	2	0	0	0	0	0	0	0	0	0	0	0	2	0	0	0	
61379	1	1	0	0	0	0	0	0	1	0	0	0	0	0	0	1	0	0	0	0	0	0	0	0	0	0	0	1	0	0	0	
61421	17	6	5	6	0	0	0	3	14	0	0	0	0	0	0	14	0	0	0	0	0	0	0	0	0	0	0	17	0	0	0	
61434	3	0	1	2	0	0	0	1	2	0	0	0	0	0	0	2	0	0	0	0	0	0	0	0	0	0	0	3	0	0	0	
61443	52	15	17	20	0	0	0	12	40	0	0	0	1	0	0	0	39	0	0	0	0	0	0	0	0	0	0	52	0	0	0	
61483	2	0	1	1	0	0	0	0	2	0	0	0	0	0	0	2	0	0	0	0	0	0	0	0	0	0	0	2	0	0	0	
61491	10	2	5	3	0	0	0	2	8	0	0	0	0	0	0	8	0	0	0	0	0	0	0	0	0	0	0	10	0	0	0	
61540	14	0	0	0	9	5	0	14	0	0	0	0	0	0	0	0	0	0	0	0	0	0	0	0	0	0	0	0	14	0	0	
TOTAL	4629	278	390	608	1877	1173	303	2233	2396	28	1	71	27	25	0	32	0	90	20	1	144	185	1674	216	38	0	146	792	715	1276	3353	

CFC #02 Child & Family Connections, Lake County Health Department, 3010 Grand Ave, 2nd Floor, Waukegan, IL 60085 - Donna Musser

60002	52	0	0	6	27	17	2	10	42	0	0	0	0	5	0	0	0	0	1	0	0	15	33	0	0	0	0	12	0	6	46
60015	44	0	0	3	21	17	3	27	17	0	0	0	0	0	0	0	0	0	0	0	0	17	0	0	0	0	0	0	3	41	0
60030	32	0	0	7	19	6	0	2	30	0	0	0	0	0	0	0	0	0	0	0	13	17	0	0	0	0	0	7	25	0	
60031	33	0	0	0	15	18	0	5	28	0	0	0	0	0	0	0	0	0	0	0	5	15	0	3	0	3	0	2	0	33	0
60045	22	0	0	0	12	9	1	10	12	0	0	1	0	0	0	0	0	0	0	0	12	0	0	0	0	0	0	0	0	22	0
60048	61	0	0	0	22	34	5	35	26	0	0	0	0	0	0	0	0	0	0	0	0	0	0	0	0	22	0	4	0	61	0
60064	7	0	0	0	5	2	0	1	6	0	0	0	0	0	0	0	0	0	0	0	4	0	0	0	0	0	0	1	0	7	0
60073	106	0	0	0	37	68	1	6	106	0	0	0	0	0	0	0	0	0	0	0	23	59	50	0	0	21	13	1	0	106	0
60084	57	0	0	0	27	24	6	12	45	0	0	0	0	0	0	0	0	0	0	0	0	34	0	0	0	8	0	4	0	57	0
60085	1181	307	415	448	7	4	0	1029	152	1	0	4	127	13	1	1	1	10	11	0	0	9	0	0	0	0	0	0	1170	11	0

Screenings Reported by CFC/CPS/DCFS and ZIP / FY2020 Year End

Zip Code	Total Screened	Ages (in Months)						Not Referred	Total Referred	Screenings of Children involved with DCFS			# of Children Ages 0 to 3 Referred to								# of Children Ages 3 to 5 Referred to					Sub-Totals					
		0-11	12-23	24-35	36-47	48-60	61+			In Intact Family Services	Children of Teen Wards	In Foster Care	EI	LEA (ECSE)	EHS	PI (center-based)	Child Care Program	HV	Other Services	Multiple Services	Rescreening	LEA (ECSE)	PFA	HS	Child Care Program	Other HV Services	Multiple Services	Rescreening	Ages 0-35 mos.	Ages 36-61+ mos.	
60099	24	0	0	1	8	13	2	4	20	0	0	0	0	1	0	0	0	0	0	0	19	0	0	0	0	0	0	0	1	23	
TOTAL	1619	307	415	465	200	212	20	1141	484	1	0	5	127	19	1	1	1	10	12	0	0	117	158	50	3	0	54	25	12	1187	432

CFC #03 Child & Family Connections, Regional Office of Education for Carroll, Jo Daviess, & Stephenson Co., 27 S State Ave, Ste 101, Freeport, IL 61032 - Angela Hodges

60115	1689	882	357	173	136	141	0	1618	71	0	0	1	0	0	0	0	0	0	0	0	0	0	0	0	0	0	0	0	0	3	1412	277
60145	126	0	0	1	44	72	9	113	13	0	0	0	0	0	0	0	0	0	0	0	1	0	0	0	0	0	0	0	12	1	125	
60548	52	0	0	5	22	22	3	11	41	0	0	3	0	0	0	0	0	0	1	0	2	35	0	0	0	3	0	0	5	47		
61021	135	83	7	28	14	2	1	116	19	0	0	0	4	0	0	0	0	0	0	0	1	10	1	0	0	1	1	0	118	17		
61025	17	5	4	3	5	0	0	16	1	0	0	0	0	0	0	0	0	0	1	0	0	0	0	0	0	0	0	0	12	5		
61032	935	599	138	72	80	45	1	714	221	0	0	2	29	3	1	0	0	0	0	0	1	56	16	0	0	0	0	1	809	126		
61036	27	9	8	10	0	0	0	24	3	0	0	0	3	0	0	0	0	0	0	0	0	0	0	0	0	0	0	0	27	0		
61041	5	1	3	0	1	0	0	5	0	0	0	0	0	0	0	0	0	0	0	0	0	0	0	0	0	0	0	0	4	1		
61048	8	1	3	3	1	0	0	8	0	0	0	0	0	0	0	0	0	0	0	0	0	0	0	0	0	0	0	0	7	1		
61071	65	0	0	5	44	16	0	36	30	0	0	0	0	1	0	0	0	0	0	0	8	19	0	0	0	0	1	2	5	60		
61074	19	7	1	7	3	1	0	19	0	0	0	0	0	0	0	0	0	0	0	0	0	0	0	0	0	0	0	0	15	4		
61081	55	16	13	16	6	4	0	52	3	0	0	0	0	0	0	0	0	0	0	0	2	0	0	0	0	0	0	1	45	10		
TOTAL	3133	1603	534	323	356	303	14	2732	402	0	0	6	36	4	1	0	0	0	2	0	115	15	120	17	0	0	4	2	19	2460	673	

CFC #04 Child & Family Connections, DayOne PACT, 1551 E Fabyan Pkwy, Geneva, IL 60134 - Ellana Mavromatis

60109	37	0	0	0	17	8	1	33	4	0	0	0	0	0	0	0	0	0	0	0	3	0	0	0	0	0	0	0	1	0	26
60110	513	13	16	21	192	271	0	82	431	0	0	0	5	0	0	0	0	4	2	1	0	27	396	0	0	0	2	2	0	50	463
60119	11	0	1	1	4	5	0	7	4	0	0	0	1	0	0	0	0	0	0	0	1	0	0	0	0	0	0	1	2	9	
60120	360	23	42	46	133	115	1	137	223	0	0	0	5	0	0	0	0	0	0	0	0	160	0	0	0	53	0	4	111	249	
60123	284	42	54	63	53	69	1	234	50	0	0	0	11	0	0	0	0	0	0	0	1	37	0	0	0	3	0	0	159	123	
60124	37	0	1	0	21	14	1	29	8	0	0	0	0	0	0	0	0	0	0	0	8	0	0	0	0	0	0	0	1	36	
60134	36	0	0	0	17	18	1	17	19	0	0	1	0	0	0	0	0	0	0	0	19	0	0	0	0	0	3	3	0	36	
60151	1	0	1	0	0	0	0	1	0	0	0	0	0	0	0	0	0	0	0	0	0	0	0	0	0	0	0	0	1	0	
60174	66	0	1	2	38	20	5	11	55	0	0	0	0	0	0	0	0	0	0	0	33	16	0	0	0	0	0	6	3	63	
60181	290	31	88	116	39	14	2	186	104	0	0	0	84	14	0	0	0	0	0	0	6	0	0	0	0	0	0	0	235	55	
60505	803	121	175	193	158	164	1	739	64	0	0	2	39	0	0	0	0	8	2	4	15	2	0	0	0	0	0	0	489	323	
60506	259	43	19	20	111	63	3	195	64	4	0	0	13	0	0	0	0	2	0	0	0	48	1	0	0	0	0	0	82	177	
60510	56	0	0	9	29	16	2	25	31	0	0	0	1	0	0	0	0	0	1	0	9	0	0	0	0	15	0	3	9	47	

Screenings Reported by CFC/CPS/DCFS and ZIP / FY2020 Year End

Zip Code	Total Screened	Ages (in Months)						Not Referred	Total Referred	Screenings of Children involved with DCFS			# of Children Ages 0 to 3 Referred to								# of Children Ages 3 to 5 Referred to						Sub-Totals				
		0-11	12-23	24-35	36-47	48-60	61+			In Intact Family Services	Children of Teen Wards	In Foster Care	EI	LEA (ECSE)	EHS	PI (center-based)	Child Care Program	HV	Other Services	Multiple Services	Rescreening	LEA (ECSE)	PFA	HS	Child Care Program	Other HV Services	Multiple Services	Rescreening	Ages 0-35 mos.	Ages 36-61+ mos.	
60543	267	0	0	0	164	100	3	83	184	0	0	0	0	0	0	0	0	0	0	0	84	90	0	0	0	0	54	64	0	267	
60545	75	0	0	0	45	28	2	38	37	0	0	1	0	0	0	0	0	0	0	0	10	12	0	0	0	0	0	18	0	75	
60560	86	0	1	1	57	25	2	19	67	0	0	1	1	0	0	0	0	0	0	0	0	36	0	0	0	0	0	30	2	84	
TOTAL	3181	273	399	472	1078	930	25	1836	1345	4	0	5	160	14	0	0	0	14	5	5	18	251	748	0	0	0	73	59	130	1144	2033

CFC #05 Child & Family Connections, DayOne PACT, 750 Warrenville Rd, Ste 300, Lisle, IL 60532 - Marianne McGuire

60101	115	6	6	18	46	39	0	42	73	0	0	0	2	3	0	0	0	0	0	0	5	54	0	0	0	0	0	1	0	30	85
60103	77	0	0	5	46	26	0	8	69	0	0	0	0	1	0	0	0	0	0	0	0	51	0	0	0	12	0	4	5	72	
60108	43	0	3	5	15	20	0	21	22	0	0	0	2	0	0	0	0	0	1	0	7	0	0	0	0	0	0	9	8	35	
60133	53	0	0	0	31	22	0	5	48	0	0	1	0	0	0	0	0	0	0	0	2	46	0	0	0	0	0	0	0	53	
60137	63	9	17	22	13	2	0	6	57	0	0	0	0	0	0	0	0	0	6	0	2	3	1	0	0	1	0	2	48	15	
60139	130	12	13	16	45	39	5	23	107	2	0	0	8	1	0	0	0	5	12	4	4	54	0	0	0	1	5	2	41	89	
60148	107	13	21	32	26	15	0	8	99	0	0	0	9	2	0	0	0	5	10	0	12	17	0	0	0	0	0	1	66	41	
60181	174	16	28	53	31	44	2	114	60	0	0	0	41	9	0	0	0	0	0	0	10	0	0	0	0	0	0	0	97	77	
60185	354	57	96	120	52	29	0	236	118	0	0	0	20	21	0	0	0	0	0	0	0	76	4	0	0	0	3	0	273	81	
60188	58	2	5	14	23	14	0	6	52	0	0	0	2	5	0	0	0	0	4	0	12	9	0	0	0	1	3	5	21	37	
60189	2	0	1	1	0	0	0	0	2	0	0	1	0	0	0	0	0	0	1	0	0	0	0	0	0	0	0	0	2	0	
60191	57	0	0	4	36	16	1	0	57	0	0	0	0	2	0	0	0	0	2	0	3	50	0	0	0	0	0	0	4	53	
60439	7	0	0	0	2	5	0	4	3	0	0	0	0	0	0	0	0	0	0	0	1	2	0	0	0	0	0	0	0	7	
60504	47	9	12	20	6	0	0	27	20	0	0	0	12	0	0	0	0	0	0	0	0	0	0	0	0	0	0	0	41	6	
60516	21	0	0	0	11	10	0	12	9	0	0	0	0	0	0	0	0	0	0	0	8	0	0	0	0	0	0	1	0	21	
60527	18	0	0	0	11	7	0	0	18	0	0	0	0	0	0	0	0	0	0	0	0	7	8	0	0	3	0	0	0	18	
60532	7	0	0	3	0	4	0	1	6	0	0	0	0	3	0	0	0	0	0	0	3	0	0	0	0	0	0	0	3	4	
60540	94	11	20	26	21	16	0	21	73	0	0	0	15	2	0	1	0	32	0	8	19	3	0	0	0	0	0	3	57	37	
60559	17	0	0	1	7	9	0	6	11	0	0	0	0	0	0	0	0	0	0	0	8	0	0	0	0	0	0	2	1	16	
60561	33	0	0	4	19	10	0	3	30	0	0	0	0	0	0	0	0	0	0	0	0	22	0	7	0	0	0	1	4	29	
TOTAL	1477	135	222	344	441	327	8	543	934	2	0	2	111	49	0	1	0	42	36	12	145	96	394	13	7	0	18	12	30	701	776

CFC #06 Child & Family Connections, Clearbrook, 1835 W Central Rd, Arlington Heights, IL 60005 - Jason Tietz

60004	152	0	0	66	40	45	1	37	115	0	0	0	27	8	0	0	0	0	0	0	80	0	0	0	0	0	0	0	0	66	86
60008	42	0	0	30	12	0	0	30	12	0	0	0	0	0	0	0	0	0	0	0	2	10	0	0	0	0	0	0	30	12	
60010	32	0	0	0	15	17	0	20	12	0	0	0	0	0	0	0	0	0	0	0	0	0	0	0	0	6	0	6	0	32	

Screenings Reported by CFC/CPS/DCFS and ZIP / FY2020 Year End

Zip Code	Total Screened	Ages (in Months)						Not Referred	Total Referred	Screenings of Children involved with DCFS			# of Children Ages 0 to 3 Referred to								# of Children Ages 3 to 5 Referred to					Sub-Totals						
		0-11	12-23	24-35	36-47	48-60	61+			In Intact Family Services	Children of Teen Wards	In Foster Care	EI	LEA (ECSE)	EHS	PI (center-based)	Child Care Program	HV	Other Services	Multiple Services	Rescreening	LEA (ECSE)	PFA	HS	Child Care Program	Other HV Services	Multiple Services	Rescreening	Ages 0-35 mos.	Ages 36-61+ mos.		
61431	1	0	0	1	0	0	0	1	0	0	0	0	0	0	0	0	0	0	0	0	0	0	0	0	0	0	0	1	0			
61441	2	2	0	0	0	0	0	2	0	0	0	0	0	0	0	0	0	0	0	0	0	0	0	0	0	0	0	2	0			
61450	2	0	1	1	0	0	0	1	1	0	0	0	0	0	0	0	0	0	0	0	1	0	0	0	0	0	0	2	0			
61455	67	13	16	13	14	11	0	49	18	6	0	2	3	0	0	0	0	0	0	4	0	2	0	0	0	2	7	42	25			
61462	36	2	3	4	13	13	1	32	4	0	0	1	0	0	0	0	0	0	0	0	1	0	0	0	0	0	3	9	27			
61501	5	1	4	0	0	0	0	5	0	0	0	1	0	0	0	0	0	0	0	0	0	0	0	0	0	0	0	5	0			
61520	18	3	6	8	1	0	0	13	5	1	0	1	1	0	0	0	0	0	0	0	4	0	0	0	0	0	0	17	1			
61542	5	0	3	2	0	0	0	5	0	0	0	1	0	0	0	0	0	0	0	0	0	0	0	0	0	0	0	5	0			
61563	2	0	0	2	0	0	0	2	0	0	0	0	0	0	0	0	0	0	0	0	0	0	0	0	0	0	0	2	0			
62311	2	0	1	1	0	0	0	2	0	1	0	0	0	0	0	0	0	0	0	0	0	0	0	0	0	0	0	2	0			
62321	5	1	4	0	0	0	0	3	2	0	0	0	0	0	0	0	0	0	0	2	0	0	0	0	0	0	0	5	0			
62326	6	3	0	3	0	0	0	5	1	0	0	0	0	0	0	0	0	0	0	0	1	0	0	0	0	0	0	6	0			
62341	9	1	3	4	1	0	0	8	1	0	0	1	0	0	0	0	0	0	0	0	1	0	0	0	0	0	0	8	1			
62358	3	0	0	3	0	0	0	3	0	0	0	0	0	0	0	0	0	0	0	0	0	0	0	0	0	0	0	3	0			
62379	3	0	1	2	0	0	0	3	0	0	0	0	0	0	0	0	0	0	0	0	0	0	0	0	0	0	0	3	0			
62681	58	0	0	0	45	13	0	1	57	8	0	2	0	0	0	0	0	0	0	0	4	53	0	0	0	0	0	0	58	0		
TOTAL	2352	366	172	166	803	608	122	389	166	350	0	10	51	0	0	0	0	0	0	11	0	64	5	81	0	0	0	0	2	394	704	1533

CFC #14 Child & Family Connections, 3000 W Rohmann Ave., West Peoria, IL 61604 - Michelle Harr

61238	1	0	0	0	0	0	1	1	0	0	0	0	0	0	0	0	0	0	0	0	0	0	0	0	0	0	0	0	1	0
61443	114	0	0	0	46	41	27	65	49	0	0	0	0	0	0	0	0	0	0	0	56	0	0	0	18	0	31	0	114	0
61491	4	0	0	0	3	1	0	4	0	0	0	0	0	0	0	0	0	0	0	0	0	0	0	0	0	0	0	0	4	0
61548	97	0	0	2	66	28	1	12	85	0	0	0	0	0	0	1	0	1	21	49	0	0	0	11	0	2	2	95	0	
61550	54	0	0	6	22	24	2	23	31	0	0	1	0	0	0	0	0	2	22	0	0	0	0	0	0	7	6	48	0	
61554	53	16	23	14	0	0	0	40	13	0	0	0	2	0	0	11	0	0	0	0	0	0	0	0	0	0	0	53	0	
61568	5	0	0	1	0	4	0	1	4	0	0	0	0	1	0	0	0	0	2	0	0	0	0	0	0	0	1	1	4	0
61571	13	0	0	2	4	5	2	8	5	0	0	2	0	2	0	0	0	0	1	0	0	0	0	0	1	0	0	2	11	0
61603	21	7	10	4	0	0	0	15	6	2	0	0	1	0	0	0	0	1	0	0	0	0	0	0	0	0	0	21	0	0
61604	2	1	1	0	0	0	0	0	2	2	0	0	0	0	0	0	2	0	0	0	0	0	0	0	0	0	0	2	0	0
61605	458	6	5	77	221	134	15	44	414	10	0	30	3	7	0	52	0	0	0	0	11	59	250	0	0	13	0	19	88	370
61607	13	3	6	2	2	0	0	10	3	0	0	0	0	2	0	0	0	0	0	0	0	0	0	0	0	0	0	11	2	0
61611	29	0	0	2	11	14	2	10	19	0	0	0	0	0	0	0	0	0	0	19	0	0	0	0	0	0	0	2	27	0
61614	253	7	30	34	126	55	1	161	92	0	0	4	6	3	0	0	0	0	1	0	0	0	0	0	30	1	21	71	182	0

Screenings Reported by CFC/CPS/DCFS and ZIP / FY2020 Year End

Zip Code	Total Screened	Ages (in Months)						Not Referred	Total Referred	Screenings of Children involved with DCFS			# of Children Ages 0 to 3 Referred to								# of Children Ages 3 to 5 Referred to					Sub-Totals						
		0-11	12-23	24-35	36-47	48-60	61+			In Intact Family Services	Children of Teen Wards	In Foster Care	EI	LEA (ECSE)	EHS	PI (center-based)	Child Care Program	HV	Other Services	Multiple Services	Rescreening	LEA (ECSE)	PFA	HS	Child Care Program	Other HV Services	Multiple Services	Rescreening	Ages 0-35 mos.	Ages 36-61+ mos.		
61616	112	13	15	16	31	37	0	44	68	0	0	3	1	0	0	0	0	0	0	1	0	0	4	62	0	0	0	0	0	0	44	68
61734	31	0	0	5	9	12	5	10	21	0	0	1	0	4	0	0	0	0	0	0	0	0	3	14	0	0	0	0	1	1	5	26
61738	21	0	0	2	8	11	0	15	6	0	0	0	0	0	0	0	0	0	0	0	0	4	0	0	0	0	0	0	2	2	19	
61755	4	0	3	1	0	0	0	2	2	0	0	0	2	0	0	0	0	0	0	0	0	0	0	0	0	0	0	0	0	4	0	
NONE	16	3	2	10	1	0	0	16	0	0	0	0	0	0	0	0	0	0	0	0	0	0	0	0	0	0	0	0	15	1		
TOTAL	1301	56	95	178	550	366	56	481	820	14	0	41	15	19	0	63	0	3	5	1	15	167	431	0	0	0	73	2	84	329	972	

CFC #15 Child & Family Connections, Services of Will, Grundy, & Kankakee Counties, Inc., 2300 Glenwood Ave, Joliet, IL 60435 - Rachel Cimino

60401	2	0	0	0	1	1	0	0	2	0	0	0	0	0	0	0	0	0	0	0	0	1	1	0	0	0	0	0	0	0	2
60404	119	2	0	11	70	34	2	46	73	0	0	0	1	0	0	0	0	0	0	0	0	10	57	0	0	0	2	0	3	13	106
60408	34	0	0	7	24	3	0	2	32	1	0	1	0	2	0	0	0	0	0	0	1	7	22	0	0	0	0	0	0	7	27
60410	37	1	0	3	19	12	2	1	36	0	0	0	0	0	0	0	0	0	0	0	0	7	29	0	0	0	0	0	0	4	33
60416	65	0	4	2	42	15	2	4	61	0	0	0	2	0	0	0	0	0	0	0	0	20	39	0	0	0	0	0	0	6	59
60417	45	1	0	0	20	24	0	2	43	0	0	0	0	0	0	0	0	0	0	0	8	35	0	0	0	0	0	0	1	44	
60421	7	1	0	1	5	0	0	1	6	0	0	0	0	1	0	0	0	0	0	0	0	1	4	0	0	0	0	0	0	2	5
60423	31	0	0	0	11	16	4	14	17	0	0	0	0	0	0	0	0	0	0	0	0	0	16	0	0	0	0	0	1	0	31
60431	90	1	4	6	30	46	3	73	17	0	0	0	0	0	0	0	0	0	0	0	0	0	0	0	0	0	1	0	16	11	79
60432	86	6	22	32	4	22	0	76	10	0	0	0	7	0	0	0	0	0	0	0	3	0	0	0	0	0	0	0	0	60	26
60433	71	21	13	16	10	11	0	33	38	3	0	0	14	0	0	0	0	0	0	0	1	3	18	0	0	0	0	0	2	50	21
60435	266	70	107	89	0	0	0	224	42	0	0	1	38	0	0	0	0	0	0	0	4	0	0	0	0	0	0	0	0	266	0
60436	166	5	2	2	74	79	4	28	138	0	0	3	0	1	0	0	0	0	0	0	0	17	114	2	0	0	0	0	4	9	157
60440	15	5	3	6	1	0	0	12	3	0	0	0	2	0	0	0	0	0	0	0	0	0	0	0	0	0	1	0	0	14	1
60444	20	0	0	0	9	11	0	5	15	0	0	0	0	0	0	0	0	0	0	0	3	11	0	0	0	0	0	0	1	0	20
60446	411	0	1	0	220	186	4	184	227	0	0	0	1	0	0	0	0	0	0	0	44	65	0	0	0	0	0	0	117	1	410
60447	117	0	0	0	85	31	1	0	117	0	0	1	0	0	0	0	0	0	0	0	19	90	0	0	0	0	0	0	8	0	117
60450	81	21	25	13	16	6	0	63	18	0	0	0	8	0	0	0	0	0	1	0	5	3	0	0	0	0	0	0	1	59	22
60451	77	0	0	0	46	30	1	0	77	0	0	0	0	0	0	0	0	0	0	0	21	11	0	39	0	0	0	6	0	77	
60481	38	0	1	12	21	4	0	1	37	0	0	0	0	5	0	0	0	0	0	0	6	23	0	0	0	0	0	0	3	13	25
60491	6	1	1	4	0	0	0	4	2	0	0	0	1	0	0	0	0	0	1	0	0	0	0	0	0	0	0	0	6	0	
60518	58	0	0	0	22	34	2	51	7	0	0	0	0	0	0	0	0	0	0	0	0	0	0	0	0	0	4	0	3	0	58
60531	34	0	0	0	13	20	1	32	2	0	0	0	0	0	0	0	0	0	0	0	1	0	0	0	0	0	1	0	0	34	
60544	338	0	0	114	88	108	28	36	302	0	0	4	0	0	0	0	0	0	0	0	171	131	0	0	0	0	0	0	0	114	224
60551	18	0	0	0	8	10	0	13	5	0	0	0	0	0	0	0	0	0	0	0	0	0	0	0	0	0	3	0	2	0	18

Screenings Reported by CFC/CPS/DCFS and ZIP / FY2020 Year End

Zip Code	Total Screened	Ages (in Months)						Not Referred	Total Referred	Screenings of Children involved with DCFS			# of Children Ages 0 to 3 Referred to								# of Children Ages 3 to 5 Referred to					Sub-Totals					
		0-11	12-23	24-35	36-47	48-60	61+			In Intact Family Services	Children of Teen Wards	In Foster Care	EI	LEA (ECSE)	EHS	PI (center-based)	Child Care Program	HV	Other Services	Multiple Services	Rescreening	LEA (ECSE)	PFA	HS	Child Care Program	Other HV Services	Multiple Services	Rescreening	Ages 0-35 mos.	Ages 36-61+ mos.	
61817	23	0	0	0	17	6	0	0	22	0	0	0	0	0	0	0	0	0	0	0	3	19	0	0	0	7	0	1	0	23	
61820	239	0	0	6	124	103	6	26	213	1	0	7	0	3	0	0	0	0	0	5	2	0	53	191	0	0	0	38	1	6	233
61821	119	28	27	23	20	21	0	47	72	0	0	10	15	0	0	0	0	8	0	1	47	0	0	0	3	0	0	0	78	41	
61832	69	0	0	0	50	16	3	1	68	0	0	1	0	0	0	0	0	0	0	0	6	62	0	0	0	18	2	0	0	69	
61846	12	0	0	0	12	0	0	0	12	0	0	1	0	0	0	0	0	0	0	0	0	12	0	0	0	2	0	0	0	12	
61853	11	0	0	1	7	3	0	5	6	0	0	0	0	0	0	0	0	0	0	0	6	0	0	0	0	0	0	0	1	10	
61866	67	0	0	3	38	23	3	0	67	3	0	0	0	3	0	0	0	0	0	0	17	44	0	0	0	3	0	0	3	64	
61873	45	0	0	0	22	23	0	1	44	0	0	0	0	0	0	0	0	0	0	9	35	0	0	0	0	0	0	0	0	45	
61883	9	0	0	0	7	1	1	0	9	0	0	0	0	0	0	0	0	0	0	1	8	0	0	0	1	0	0	0	0	9	
TOTAL	2625	550	461	304	818	460	32	1603	1021	10	0	25	59	7	2	0	0	8	37	9	71	151	682	0	30	3	45	49	15	1315	1310

CFC #17 Child & Family Connections, ROE of Adams/Pike Counties, 510 Maine St, Ste 615, Quincy, IL 62301 - Kara Hoffman

62013	7	0	0	0	4	2	1	5	2	0	0	0	0	0	0	0	0	0	0	0	0	0	0	0	0	0	0	2	0	7	
62016	50	0	0	3	25	16	6	40	10	0	0	0	0	0	0	0	0	0	0	1	1	0	0	0	0	0	0	8	3	47	
62044	8	0	0	1	4	3	0	6	2	0	0	1	0	0	0	0	0	0	0	0	0	0	0	0	0	0	0	2	1	7	
62047	35	0	0	5	21	8	1	32	3	1	0	1	1	0	0	0	0	0	0	1	0	0	0	0	0	0	0	2	5	30	
62082	3	0	0	0	2	1	0	2	1	1	0	0	0	0	0	0	0	0	0	0	0	0	0	0	0	0	0	1	0	3	
62092	80	0	0	16	32	32	0	64	16	2	0	2	0	0	0	0	0	0	0	2	4	0	0	0	0	0	0	10	16	64	
62340	15	0	0	5	5	5	0	8	7	0	0	0	0	0	0	0	0	0	0	1	1	0	0	0	0	0	0	5	5	10	
62345	185	22	56	68	28	11	0	171	14	0	0	0	1	0	0	0	0	0	2	0	0	1	2	0	0	0	3	0	10	146	39
62353	35	0	0	1	18	12	4	29	6	1	0	0	0	0	0	0	0	0	0	2	0	0	0	0	0	0	0	4	1	34	
62363	123	0	0	16	66	35	6	98	25	0	0	0	0	0	0	0	0	0	0	1	3	0	0	0	0	0	0	21	16	107	
62366	7	0	0	3	3	1	0	7	0	0	0	0	0	0	0	0	0	0	0	0	0	0	0	0	0	0	0	0	3	4	
62611	8	0	0	2	5	1	0	6	2	0	0	0	0	0	0	0	0	0	0	0	0	0	0	0	0	0	0	2	2	6	
62618	121	0	0	4	77	37	3	87	34	1	0	1	0	0	0	0	0	0	0	0	0	0	0	0	0	0	0	34	4	117	
62638	4	0	0	2	1	1	0	3	1	0	0	0	1	0	0	0	0	0	0	1	0	0	0	0	0	0	0	0	2	2	
62650	345	0	0	31	112	150	33	309	36	12	0	2	0	0	0	0	0	0	0	4	1	0	0	0	0	0	0	31	31	295	
62665	3	0	0	0	0	3	0	3	0	0	0	0	0	0	0	0	0	0	0	0	0	0	0	0	0	0	0	0	0	3	
62692	22	0	0	7	5	9	1	16	6	1	0	1	0	0	0	0	0	0	0	0	0	0	0	0	0	0	0	6	7	15	
62694	33	0	0	3	13	17	0	29	4	2	0	0	0	0	0	0	0	0	0	0	0	0	0	0	0	0	0	4	3	30	
TOTAL	1084	22	56	167	421	344	55	915	169	21	0	8	3	0	0	0	0	0	2	0	11	13	2	0	0	0	3	0	142	245	820

Screenings Reported by CFC/CPS/DCFS and ZIP / FY2020 Year End

Zip Code	Total Screened	Screenings of Children involved with DCFS							# of Children Ages 0 to 3 Referred to										# of Children Ages 3 to 5 Referred to						Sub-Totals						
		Ages (in Months)						Not Referred	Total Referred	In Intact Family Services	Children of Teen Wards	In Foster Care	LEA EI	LEA (ECSE)	PI (center-based)	Child Care Program	HV	Other Services	Multiple Services	Rescreening	LEA (ECSE)	PFA	HS	Child Care Program	HV	Other Services	Multiple Services	Rescreening	Ages 0-35 mos.	Ages 36-61+ mos.	
		0-11	12-23	24-35	36-47	48-60	61+																								
CFC #18 Child & Family Connections, Sangamon Co. Public Health Department, 2833 S Grand Ave, E, Springfield, IL 62703 - Lisa McGlothlin																															
62515	41	0	0	13	23	5	0	0	41	0	0	0	0	0	0	0	0	1	0	0	3	41	0	0	0	0	0	4	13	28	
62561	19	5	8	6	0	0	0	16	3	0	0	0	2	0	0	0	15	0	0	8	0	0	0	0	4	0	0	3	19	0	
62644	38	9	9	11	7	2	0	17	21	0	0	1	2	0	0	0	17	2	4	1	0	9	0	0	0	2	0	3	29	9	
62670	14	0	0	3	8	3	0	0	0	0	0	0	0	0	0	0	0	0	0	0	0	0	0	0	0	3	0	3	3	11	
62702	11	1	4	3	3	0	0	10	1	1	0	1	1	0	0	0	0	0	0	0	0	0	0	0	0	0	0	0	8	3	
TOTAL	123	15	21	36	41	10	0	43	66	1	0	2	5	0	0	0	0	32	3	4	9	3	50	0	0	4	5	0	13	72	51
CFC #19 Child & Family Connections, Macon Co. Community Mental Health Board, 132 S Water St, Ste 604, Decatur, IL 62523 - Amy Farmer																															
61910	24	0	0	2	16	6	0	0	24	0	0	0	0	2	0	0	0	0	0	0	6	15	0	0	0	3	3	0	2	22	
61911	39	0	1	8	17	7	6	0	39	0	0	0	0	2	0	0	0	0	7	0	0	5	20	0	0	0	7	3	0	9	30
61913	6	0	0	0	4	2	0	0	6	0	0	0	0	0	0	0	0	0	0	0	1	5	0	0	0	1	1	0	0	6	
61914	16	0	0	2	12	2	0	0	16	0	0	0	0	2	0	0	0	0	0	0	3	10	1	0	0	3	3	0	2	14	
61920	138	0	0	1	87	39	11	37	101	0	0	0	0	1	0	0	0	0	0	0	20	78	0	0	0	9	9	0	1	137	
61924	12	0	0	0	7	5	0	0	12	0	0	0	0	0	0	0	0	0	0	0	1	8	3	0	0	5	5	0	0	12	
61933	17	1	1	4	3	3	5	2	15	0	0	0	0	1	0	0	0	0	4	0	0	3	3	0	0	0	4	0	0	6	11
61937	3	0	0	1	2	0	0	0	3	0	0	0	0	1	0	0	0	0	0	0	0	2	0	0	0	0	0	0	1	2	
61938	226	0	0	5	123	50	48	96	130	0	0	0	0	0	0	0	0	4	0	0	33	91	0	0	0	10	8	0	5	221	
61943	30	0	2	6	15	3	4	2	28	0	0	0	0	2	0	0	0	0	4	0	0	0	17	0	0	0	5	1	1	8	22
61944	97	1	2	15	30	18	31	29	68	0	0	0	2	0	0	0	0	0	8	1	1	8	46	0	0	0	5	5	1	18	79
61951	132	2	2	16	58	24	30	8	124	0	0	0	0	3	0	0	0	0	0	0	17	61	0	0	0	36	13	0	20	112	
61953	15	0	0	2	9	4	0	0	15	0	0	0	0	0	0	0	0	1	1	0	3	10	0	0	0	2	2	0	2	13	
61956	13	0	0	0	9	4	0	0	13	0	0	0	0	0	0	0	0	0	0	0	4	9	0	0	0	3	3	0	0	13	
61957	11	0	0	0	8	3	0	0	11	0	0	0	0	0	0	0	0	0	0	0	2	9	0	0	0	0	0	0	0	11	
62221	1	0	0	0	1	0	0	0	1	0	0	0	0	0	0	0	0	0	0	0	1	0	0	0	0	0	0	0	0	1	
62420	77	1	2	19	40	12	3	4	73	0	0	0	2	0	0	0	0	0	16	0	1	8	44	0	0	0	6	4	1	22	55
62422	65	0	0	10	23	14	18	3	62	0	0	0	1	0	0	0	0	0	9	0	0	3	35	0	0	0	17	3	0	10	55
62441	31	0	0	0	20	10	1	0	31	0	0	0	0	0	0	0	0	0	0	0	9	22	0	0	0	2	2	0	0	31	
62442	6	0	0	0	5	1	0	0	6	0	0	0	0	0	0	0	0	0	0	0	1	4	1	0	0	1	1	0	0	6	
62447	63	0	1	7	27	14	14	19	44	0	0	0	1	0	0	0	0	0	5	0	1	1	22	0	0	0	15	1	0	8	55
62463	9	0	0	0	8	1	0	0	9	0	0	0	0	0	0	0	0	0	0	0	0	9	0	0	0	3	3	0	0	9	
62465	3	0	0	2	1	0	0	0	3	0	0	0	0	0	0	0	0	0	2	1	0	0	1	0	0	0	0	0	2	1	
62468	15	0	0	2	13	0	0	0	15	0	0	0	0	3	0	0	0	0	2	1	0	4	5	2	0	0	3	4	0	2	13

Screenings Reported by CFC/CPS/DCFS and ZIP / FY2020 Year End

Zip Code	Total Screened	Ages (in Months)						Not Referred	Total Referred	Screenings of Children involved with DCFS			# of Children Ages 0 to 3 Referred to								# of Children Ages 3 to 5 Referred to					Sub-Totals						
		0-11	12-23	24-35	36-47	48-60	61+			In Intact Family Services	Children of Teen Wards	In Foster Care	LEA EI	LEA (ECSE)	EHS	PI (center-based)	Child Care Program	HV	Other Services	Multiple Services	Rescreening	LEA (ECSE)	PFA	HS	Child Care Program	Other HV Services	Multiple Services	Rescreening	Ages 0-35 mos.	Ages 36-61+ mos.		
		62477	2	0	0	0	2			0	0	0	2	0	0	0	0	0	0	0	0	0	0	0	1	0	1	0	0	1	1	0
62522	139	43	47	49	0	0	0	133	6	13	0	18	6	0	0	0	0	0	0	0	0	0	0	0	0	0	0	0	139	0		
62565	8	0	0	0	8	0	0	0	8	0	0	0	0	0	0	0	0	0	0	0	5	3	0	0	0	3	3	0	0	8		
TOTAL	1198	48	58	151	548	222	171	333	865	13	0	18	12	17	0	0	0	0	0	62	4	3	139	529	8	0	0	144	78	3	257	941

CFC #20 Child & Family Connections, Community Support Systems, 1901 S 4th St, Ste 209, Effingham, IL 62401 - Rita Wahl

62014	11	3	5	2	1	0	0	9	2	0	0	0	2	0	0	0	0	0	0	0	0	0	0	0	0	0	0	0	0	10	1	
62262	12	4	5	3	0	0	0	10	2	0	0	2	2	0	0	0	0	0	0	0	0	0	0	0	0	0	0	0	12	0		
62411	8	0	0	2	3	2	1	0	8	0	0	0	0	1	0	0	0	0	1	0	0	5	0	0	0	1	1	0	2	6		
62414	8	0	0	0	8	0	0	0	8	0	0	0	0	0	0	0	0	0	0	1	7	0	0	0	0	2	2	0	0	8		
62424	8	0	0	0	6	2	0	0	8	0	0	0	0	0	0	0	0	0	0	1	7	0	0	0	0	3	3	0	0	8		
62439	6	0	0	1	3	2	0	0	4	2	0	1	0	1	0	0	0	0	0	5	0	0	0	0	0	0	0	0	1	5		
62626	10	0	8	2	0	0	0	5	5	0	0	0	2	0	0	0	0	0	0	0	0	0	0	0	0	0	0	0	10	0		
62649	4	0	0	1	3	0	0	2	2	0	0	0	0	0	0	0	0	0	0	0	0	0	0	0	0	0	0	1	1	3		
62839	36	0	0	0	29	7	0	0	36	0	0	1	0	0	0	0	0	0	0	0	31	0	0	0	0	1	0	4	0	36		
TOTAL	103	7	18	11	53	13	1	26	75	2	0	4	6	2	0	0	0	0	0	1	0	4	8	50	0	0	0	7	6	5	36	67

CFC #21 Child & Family Connections, Regional Office of Education #13, 4 Eagle Center, Ste 4, O'Fallon, IL 62269 - Terri Kampwerth

62002	38	0	0	2	24	12	0	0	38	0	0	0	0	1	0	0	0	1	0	0	5	30	0	0	0	0	0	0	1	2	36
62010	42	0	0	5	27	10	0	0	42	0	0	1	0	1	0	0	0	0	0	0	3	38	13	2	0	1	20	4	5	37	
62024	92	10	15	29	28	9	1	52	40	0	0	1	3	0	0	2	0	15	6	0	4	44	0	0	0	0	0	0	54	38	
62025	75	0	0	18	39	17	1	14	61	0	0	0	0	0	0	0	0	0	0	0	18	59	0	0	0	0	0	0	18	57	
62040	1425	388	409	288	182	146	0	1356	35	16	0	8	23	0	0	0	0	4	1	0	0	0	0	0	0	0	0	0	1085	328	
62048	21	0	0	0	18	3	0	0	21	0	0	0	0	0	0	0	0	0	0	0	2	19	0	0	0	3	3	0	0	21	
62087	51	0	0	12	31	8	0	8	43	0	0	1	0	0	0	0	0	0	0	0	4	39	0	0	0	16	0	0	12	39	
62201	1275	40	79	158	292	517	189	1184	91	0	0	0	22	0	286	0	0	0	0	0	69	0	1012	0	0	0	0	115	277	998	
62206	3	0	0	1	1	1	0	0	3	0	0	0	0	1	0	0	1	0	0	2	0	1	0	0	1	1	0	1	2		
62220	36	0	0	0	24	12	0	26	10	0	0	1	0	0	0	0	0	0	0	4	14	0	0	0	0	6	6	2	0	36	
62221	18	0	0	1	10	7	0	7	11	0	0	0	0	0	0	0	0	0	0	5	3	0	0	0	2	0	0	1	17		
62223	261	35	45	53	86	42	0	169	96	3	0	3	15	0	0	0	0	2	0	0	5	76	0	0	0	3	11	2	133	128	
62226	19	0	0	2	9	8	0	0	0	0	0	0	0	0	0	0	0	0	0	1	9	0	8	0	7	7	0	2	17		
62233	30	0	0	8	14	8	0	0	30	0	0	2	0	0	0	0	0	0	0	2	21	9	0	0	0	0	0	1	8	22	

Screenings Reported by CFC/CPS/DCFS and ZIP / FY2020 Year End

Zip Code	Total Screened	Ages (in Months)						Not Referred	Total Referred	Screenings of Children involved with DCFS			# of Children Ages 0 to 3 Referred to								# of Children Ages 3 to 5 Referred to						Sub-Totals				
		0-11	12-23	24-35	36-47	48-60	61+			In Intact Family Services	Children of Teen Wards	In Foster Care	EI	LEA (ECSE)	EHS	PI (center-based)	Child Care Program	HV	Other Services	Multiple Services	Rescreening	LEA (ECSE)	PFA	HS	Child Care Program	Other HV Services	Multiple Services	Rescreening	Ages 0-35 mos.	Ages 36-61+ mos.	
62234	161	0	3	9	66	71	12	31	132	7	0	3	0	0	0	0	0	3	0	0	0	17	129	3	0	0	2	0	1	12	149
62257	7	0	0	2	3	2	0	0	7	0	0	0	0	0	0	0	0	0	0	1	0	6	0	0	0	0	5	5	2	5	
62269	199	15	34	42	62	45	1	157	42	0	0	1	9	1	0	0	0	0	8	2	0	14	4	0	0	0	27	10	3	91	108
62286	28	0	0	0	18	10	0	0	28	0	0	0	0	0	0	0	0	0	0	0	0	0	28	0	0	0	0	0	0	0	28
62288	9	0	0	2	5	2	0	0	9	0	0	0	0	0	0	0	0	0	0	0	0	0	9	0	0	0	0	0	0	2	7
62294	145	18	24	46	40	17	0	51	89	0	0	2	7	7	0	0	4	0	5	3	7	7	39	0	10	0	0	0	0	88	57
62298	47	0	0	0	21	26	0	0	0	0	0	2	0	0	0	0	0	0	0	0	0	5	19	0	0	0	3	0	0	0	47
TOTAL	3982	506	609	678	1000	973	204	3055	828	26	0	25	79	11	286	2	5	25	20	6	156	167	586	1038	20	0	71	63	134	1793	2177

CFC #22 Child & Family Connections, Regional Office of Education #13, 660 W Noleman St, Centralia, IL 62801 - Nicole Van Hise

62216	14	6	4	3	1	0	0	13	1	0	0	0	1	0	0	0	0	0	0	0	0	0	0	0	0	0	0	0	0	13	1
62230	14	2	4	3	4	1	0	6	4	0	0	0	9	0	0	0	0	0	0	0	0	0	0	0	0	0	0	0	9	5	
62245	13	2	4	3	4	0	0	13	0	0	0	0	0	0	0	0	0	0	0	0	0	0	0	0	0	0	0	0	9	4	
62265	32	7	7	13	5	0	0	29	3	0	0	0	3	0	0	0	0	0	0	0	0	0	0	0	0	0	0	0	27	5	
62810	21	0	0	2	5	7	7	21	0	0	0	0	0	0	0	0	0	0	0	0	0	0	0	0	0	0	0	0	2	19	
62812	65	10	18	26	4	7	0	1	64	0	0	0	0	0	5	0	0	48	0	0	0	0	11	0	0	0	0	0	54	11	
62814	9	0	0	1	5	3	0	9	0	0	0	0	0	0	0	0	0	0	0	0	0	0	0	0	0	0	0	0	1	8	
62822	58	3	14	22	11	7	1	20	38	0	0	0	4	0	1	0	7	19	1	6	7	0	10	0	0	1	0	0	39	19	
62836	59	10	15	21	12	1	0	16	43	0	0	0	0	0	0	0	0	37	0	0	0	0	3	0	0	0	1	2	0	46	13
62846	27	0	0	6	6	11	4	26	1	0	0	0	0	0	0	0	0	0	0	0	0	0	0	0	0	0	1	0	0	6	21
62864	72	1	0	26	38	7	0	70	2	0	0	0	0	0	0	0	0	0	1	0	0	0	0	0	0	0	1	0	0	27	45
62865	8	3	3	2	0	0	0	0	8	0	0	0	0	0	0	0	0	8	0	0	0	0	0	0	0	0	0	0	0	8	0
62884	16	0	0	2	9	4	1	0	16	0	0	0	0	0	0	0	0	0	2	0	0	0	14	0	0	0	0	0	0	2	14
62890	19	3	5	4	4	3	0	0	19	0	0	0	0	0	1	0	0	8	1	0	0	0	9	0	0	0	0	0	0	12	7
62896	122	2	1	22	57	39	1	2	120	0	0	0	1	0	2	2	0	0	20	2	3	6	93	2	0	0	2	6	2	25	97
62918	3	0	2	1	0	0	0	0	3	0	0	0	0	0	3	0	0	0	0	0	0	0	0	0	0	0	0	0	0	3	0
62921	1	0	0	1	0	0	0	0	1	0	0	0	0	0	1	0	0	0	0	0	0	0	0	0	0	0	0	0	0	1	0
62922	3	1	0	0	1	1	0	0	3	0	0	0	0	0	1	0	0	0	0	0	0	1	0	0	2	0	0	2	2	1	2
62924	33	3	1	2	7	20	0	1	32	0	0	0	0	0	4	0	1	0	0	2	2	4	0	0	27	0	0	27	27	6	27
62948	3	0	0	0	3	0	0	0	3	0	0	0	0	0	0	0	0	0	0	0	0	1	0	1	1	0	1	1	1	0	3
62951	3	1	1	1	0	0	0	0	3	0	0	0	0	0	3	0	0	0	0	0	0	0	0	0	0	0	0	0	0	3	0
62959	136	7	1	0	50	75	3	124	12	1	0	22	0	0	3	0	2	0	0	3	3	3	0	0	1	0	0	1	2	8	128

Screenings Reported by CFC/CPS/DCFS and ZIP / FY2020 Year End

Zip Code	Total Screened	Screenings of Children involved with DCFS						Not Referred	Total Referred	# of Children Ages 0 to 3 Referred to										# of Children Ages 3 to 5 Referred to						Sub-Totals								
		Ages (in Months)								In Intact Family Services	Children of Teen Wards	In Foster Care	EI	LEA (ECSE)	EHS	PI (center-based)	Child Care Program	HV	Other Services	Multiple Services	Rescreening	LEA (ECSE)	PFA	HS	Child Care Program	Other HV Services	Multiple Services	Rescreening	Ages 0-35 mos.	Ages 36-61+ mos.				
62999	18	0	0	6	7	4	1	15	3	0	0	0	0	0	0	0	0	0	0	0	0	0	0	0	0	0	0	0	0	0	0	0	6	12
TOTAL	749	61	80	167	233	190	18	366	379	1	0	22	18	0	24	2	10	120	25	13	15	15	143	3	31	1	6	39	34	308	441			

CFC #23 Child & Family Connections, Wabash & Ohio Valley Special Education Dist., 800 S Division St, Norris City, IL 62869 - Charity Heifner

62410	7	0	0	0	6	1	0	0	7	0	0	0	0	0	0	0	0	0	0	0	0	7	0	0	0	2	0	1	0	7	
62476	6	0	0	1	3	2	0	0	6	0	0	0	1	0	0	0	0	0	1	0	0	0	5	0	0	0	2	0	0	1	5
62806	94	3	6	3	26	56	0	82	12	0	0	0	4	0	0	0	0	0	1	0	0	0	7	0	0	0	3	0	0	12	82
62821	66	0	3	8	35	20	0	6	60	0	0	0	2	0	0	0	7	0	0	2	7	0	46	0	7	0	20	1	9	11	55
62835	64	5	15	7	22	15	0	35	29	0	0	0	1	0	0	0	0	0	3	0	0	0	26	0	0	0	8	1	3	27	37
62837	271	27	37	54	96	56	1	172	90	0	0	0	8	0	0	0	0	0	5	2	6	0	61	0	0	0	28	1	5	118	153
62844	16	0	0	0	10	6	0	0	16	0	0	0	0	0	0	0	0	0	0	0	0	0	16	0	0	0	5	3	0	0	16
62859	82	6	19	14	23	20	0	71	11	0	0	0	0	0	0	0	0	0	0	0	0	3	3	0	0	0	2	0	4	39	43
62863	140	53	19	8	50	10	0	87	53	0	0	0	6	0	0	0	0	0	2	0	11	0	35	0	0	0	17	1	1	80	60
62869	27	1	3	1	7	15	0	0	27	0	0	0	0	0	0	0	5	0	0	0	5	1	6	0	16	0	3	1	16	5	22
62895	17	0	0	1	14	2	0	0	17	0	0	0	1	0	0	0	0	0	0	0	0	0	16	0	0	0	9	0	0	1	16
62917	22	0	0	1	16	5	0	0	22	0	0	0	1	0	0	0	0	0	1	0	0	13	8	0	0	0	5	2	1	1	21
62930	83	5	5	8	34	28	3	3	80	0	0	0	9	0	0	0	14	0	0	5	16	1	43	0	19	0	19	4	19	18	65
62931	29	0	0	0	19	10	0	0	29	0	0	0	0	0	0	0	0	0	0	0	0	0	29	0	0	0	8	0	4	0	29
62935	23	0	0	4	14	5	0	0	23	0	0	0	4	0	0	0	0	0	1	0	0	0	19	0	0	0	11	1	2	4	19
62938	20	0	0	0	15	4	1	0	20	0	0	0	0	0	0	0	0	0	0	0	0	0	20	0	0	0	8	0	3	0	20
62946	430	60	64	66	130	129	0	354	95	0	0	0	8	0	0	0	1	0	1	0	4	0	56	2	1	0	25	2	9	190	259
62954	27	0	0	1	13	13	0	0	27	0	0	0	1	0	0	0	0	0	0	0	0	0	26	0	0	0	11	3	3	1	26
62984	84	8	15	35	16	10	0	84	0	0	0	0	0	0	0	0	0	0	1	0	0	0	0	0	0	0	0	0	0	58	26
TOTAL	1508	168	186	212	549	407	5	894	624	0	0	0	46	0	0	0	27	0	16	9	49	18	429	2	43	0	186	20	80	566	961

CFC #24 Child & Family Connections, Archway, Inc., 2751 W Main, PO Box 1180, Carbondale, IL 62901-1180 - Lindsay Baskin

62274	9	1	0	0	5	3	0	1	8	0	0	0	0	0	0	0	0	0	0	0	0	8	0	0	0	0	0	0	0	1	8
62832	28	1	1	1	11	12	2	3	25	0	0	0	0	0	0	0	0	0	0	0	0	1	23	0	0	0	0	0	1	3	25
62890	9	4	3	2	0	0	0	0	6	0	0	0	0	0	0	0	9	0	0	0	0	0	0	0	0	0	0	0	9	0	
62893	14	5	4	5	0	0	0	0	0	0	0	0	0	0	1	0	13	0	0	0	0	0	0	0	0	0	0	0	14	0	
62901	637	95	87	129	172	148	6	513	121	1	0	3	4	0	4	9	28	4	0	28	28	11	36	3	16	0	1	16	16	311	326
62902	13	0	0	1	5	7	0	0	13	0	0	0	1	0	0	0	1	0	0	1	1	1	0	0	12	0	0	12	12	1	12

Screenings Reported by CFC/CPS/DCFS and ZIP / FY2020 Year End

Zip Code	Total Screened	Ages (in Months)						Not Referred	Total Referred	Screenings of Children involved with DCFS			# of Children Ages 0 to 3 Referred to								# of Children Ages 3 to 5 Referred to						Sub-Totals				
		0-11	12-23	24-35	36-47	48-60	61+			In Intact Family Services	Children of Teen Wards	In Foster Care	EI	LEA (ECSE)	EHS	PI (center-based)	Child Care Program	HV	Other Services	Multiple Services	Rescreening	LEA (ECSE)	PFA	HS	Child Care Program	Other HV Services	Multiple Services	Rescreening	Ages 0-35 mos.	Ages 36-61+ mos.	
62903	96	19	21	22	14	20	0	1	95	0	0	0	0	0	0	0	15	42	5	53	51	1	35	0	0	2	4	14	12	62	34
62907	2	0	0	0	1	1	0	0	2	0	0	0	0	0	0	0	0	0	0	0	0	0	2	0	0	0	0	0	0	0	2
62916	11	0	0	0	7	2	1	0	11	0	0	0	0	0	0	0	0	0	0	0	0	0	11	0	0	0	0	0	0	0	10
62924	20	5	0	2	8	4	1	6	14	0	0	0	0	1	0	0	0	0	0	0	0	1	12	0	0	0	0	0	0	7	13
62931	5	0	1	3	1	0	0	0	5	0	0	0	1	0	3	0	0	0	0	0	0	0	0	1	0	0	0	0	0	4	1
62932	25	5	8	5	6	1	0	2	9	0	0	0	0	2	0	7	0	7	0	0	0	4	3	0	0	0	0	0	0	18	7
62958	1	1	0	0	0	0	0	1	0	0	0	0	0	0	0	0	0	0	0	0	0	0	0	0	0	0	0	0	1	0	
62966	68	16	7	13	20	12	0	1	67	0	0	0	2	0	0	18	9	7	0	9	9	1	29	0	4	0	0	4	4	36	32
62999	1	0	0	0	0	1	0	0	1	0	0	0	0	0	0	0	0	0	0	0	0	0	1	0	0	0	0	0	0	0	1
TOTAL	939	152	132	183	250	211	10	528	377	1	0	3	8	3	7	35	53	82	5	91	89	20	160	4	32	2	5	46	45	467	471

CFC #25 Child & Family Connections, Options & Advocacy for McHenry Co., 365 Millennium Dr, Ste A, Crystal Lake, IL 60012 - Susan Beckman

60013	51	0	0	0	19	29	3	28	23	0	0	0	0	0	0	0	0	0	0	0	0	23	0	0	0	0	0	0	0	0	51
60014	887	190	256	292	70	78	1	162	725	0	0	1	685	4	0	0	0	0	0	0	0	23	2	0	0	2	8	0	1	738	149
60033	139	12	20	37	47	23	0	68	71	0	0	0	7	0	0	0	0	0	1	0	0	4	59	0	0	0	0	0	0	69	70
60034	22	2	6	3	10	1	0	0	22	0	0	0	0	0	0	0	11	0	0	0	0	3	11	0	0	0	0	3	0	11	11
60042	120	12	25	35	21	27	0	108	12	0	0	1	10	0	0	0	0	0	0	0	0	1	0	0	0	0	1	0	0	72	48
60050	32	0	0	0	10	22	0	2	30	0	0	0	0	0	0	0	0	0	0	0	0	10	20	0	0	0	0	0	0	0	32
60072	22	0	0	7	5	9	1	0	22	0	0	1	0	6	0	0	0	0	0	0	0	2	7	0	0	0	0	0	7	7	15
60097	18	0	0	0	11	7	0	0	18	0	0	0	0	0	0	0	0	0	0	0	0	2	16	0	0	0	0	0	0	0	18
60098	200	0	0	0	103	97	0	18	182	0	0	1	0	0	0	0	0	0	0	0	0	4	181	0	0	0	3	8	0	0	200
60142	98	1	3	23	49	21	1	26	72	0	1	0	0	0	0	0	0	0	2	0	0	30	39	0	0	0	0	0	1	27	71
60152	50	0	0	8	27	15	0	5	45	0	0	0	0	0	0	0	0	0	0	0	1	12	32	0	0	0	0	0	0	8	42
60156	29	0	0	11	9	9	0	6	23	0	0	0	0	0	0	0	0	0	0	0	0	10	13	0	0	0	0	0	0	11	18
TOTAL	1668	217	310	416	381	338	6	423	1245	0	1	4	702	10	0	0	0	11	3	0	1	124	380	0	0	2	12	11	9	943	725

Chicago Public Schools, Office of Diverse Learner Supports & Services, 42 W Madison St, 2nd Floor, Chicago, IL 60602 - Dr. Stephanie Jones

60602	3002	77	253	523	925	773	449	1852	1150	0	0	13	94	0	0	0	0	0	0	0	0	0	0	0	0	0	0	0	0	426	853	2147
TOTAL	3002	77	253	523	925	773	449	1852	1150	0	0	13	94	0	0	0	0	0	0	0	0	0	0	0	0	0	0	0	426	853	2147	

DCFS/Erikson Institute Statewide, 451 North LaSalle Street, Chicago, IL 60654 - Andria Goss

NONE	417	148	134	92	38	5	0	0	417	400	0	0	158	5	135	0	55	229	87	0	107	17	0	26	4	14	28	0	4	374	43
------	-----	-----	-----	----	----	---	---	---	-----	-----	---	---	-----	---	-----	---	----	-----	----	---	-----	----	---	----	---	----	----	---	---	-----	----

Screenings Reported by CFC/CPS/DCFS and ZIP / FY2020 Year End

Zip Code	Total Screened	Ages (in Months)						Not Referred	Total Referred	Screenings of Children involved with DCFS			# of Children Ages 0 to 3 Referred to								# of Children Ages 3 to 5 Referred to				Sub-Totals						
		0-11	12-23	24-35	36-47	48-60	61+			In Intact	Children In	Foster Care	LEA EI	(ECSE)	EHS	PI (center-based)	Child Care Program	HV	Other Services	Multiple Services	Rescreening	LEA (ECSE)	PFA	HS	Child Care Program	Other HV Services	Multiple Services	Rescreening	Ages 0-35 mos.	Ages 36-61+ mos.	
TOTAL	417	148	134	92	38	5	0	0	417	400	0	0	158	5	135	0	55	229	87	0	107	17	0	26	4	14	28	0	4	374	43

Screenings Reported by CFC/CPS/DCFS and Month / FY2020 Year End

Month	Total Screened	Screenings of Children involved with DCFS							# of Children Ages 0 to 3 Referred to										# of Children Ages 3 to 5 Referred to						Sub-Totals						
		Ages (in Months)						Not Referred	Total Referred	In Intact Family Services	Children of Teen Wards	In Foster Care	LEA EI	LEA (ECSE)	PI (center-EHS based)	Child Care Program	HV	Other Services	Multiple Services	Rescreening	LEA (ECSE)	PFA	HS	Child Care Program	Other HV Services	Multiple Services	Rescreening	Ages 0-35 mos.	Ages 36-61+ mos.		
		0-11	12-23	24-35	36-47	48-60	61+																								
CFC #01 Child & Family Connections, Youth Services Network, Inc., 107 North 3rd Street, Rockford, IL 61107 - Dee Dee Lowery																															
Jul-19	454	22	25	37	244	112	14	139	315	8	0	8	0	0	0	0	0	3	4	0	4	21	256	52	0	0	28	125	103	84	370
Aug-19	610	36	54	68	288	144	20	156	454	4	0	10	6	0	0	13	0	14	5	0	17	21	336	65	15	0	27	197	173	158	452
Sep-19	485	41	56	58	197	121	12	149	336	4	1	5	1	2	0	1	0	19	0	0	34	23	241	65	10	0	13	151	109	155	330
Oct-19	481	24	46	24	227	149	11	321	160	4	0	10	1	0	0	1	0	9	0	0	4	11	116	18	0	0	11	69	71	94	387
Nov-19	420	36	45	81	148	94	16	264	156	1	0	6	1	0	0	4	0	7	2	0	7	17	105	4	0	0	14	43	42	162	258
Dec-19	233	14	19	35	100	52	13	111	122	2	0	7	0	0	0	5	0	9	3	0	7	11	72	1	9	0	12	36	31	68	165
Jan-20	520	37	50	78	152	145	58	276	244	1	0	9	2	8	0	5	0	9	0	0	48	27	138	7	1	0	13	76	62	165	355
Feb-20	775	25	32	83	276	234	125	453	322	2	0	8	9	12	0	3	0	9	0	0	12	41	191	1	0	0	14	46	77	140	635
Mar-20	175	12	15	19	62	55	12	67	108	1	0	3	1	1	0	0	0	11	2	1	1	5	74	1	0	0	13	32	32	46	129
Apr-20	120	11	10	48	46	5	0	116	4	0	0	0	1	0	0	0	0	0	0	0	0	2	1	0	0	0	0	0	0	69	51
May-20	101	3	13	44	23	18	0	75	26	0	0	1	0	2	0	0	0	0	4	0	2	5	9	0	3	0	1	0	0	60	41
Jun-20	255	17	25	33	114	44	22	106	149	1	0	4	5	0	0	0	0	0	0	0	8	1	135	2	0	0	0	17	15	75	180
TOTAL	4629	278	390	608	1877	1173	303	2233	2396	28	1	71	27	25	0	32	0	90	20	1	144	185	1674	216	38	0	146	792	715	1276	3353
CFC #02 Child & Family Connections, Lake County Health Department, 3010 Grand Ave, 2nd Floor, Waukegan, IL 60085 - Donna Musser																															
Jul-19	143	42	51	48	2	0	0	124	19	0	0	0	14	2	0	0	1	1	3	0	0	0	0	0	0	0	0	0	0	141	2
Aug-19	230	31	46	43	42	67	1	113	123	0	0	0	11	2	0	0	0	0	1	0	0	18	60	25	0	0	3	0	3	120	110
Sep-19	219	29	40	48	46	55	1	135	84	1	0	3	9	1	0	0	0	1	1	0	0	31	38	0	0	0	8	6	4	117	102
Oct-19	194	31	43	51	33	34	2	128	66	0	0	2	12	3	1	1	0	1	1	0	0	14	31	17	0	0	26	14	0	125	69
Nov-19	182	31	43	44	34	24	6	135	47	0	0	0	11	2	0	0	0	2	2	0	0	11	17	8	3	0	10	4	4	118	64
Dec-19	155	29	44	46	23	9	4	102	53	0	0	0	17	3	0	0	0	2	1	0	0	18	12	0	0	0	1	1	0	119	36
Jan-20	173	42	46	62	12	10	1	134	39	0	0	0	16	4	0	0	0	2	2	0	0	20	0	0	0	0	0	0	0	150	23
Feb-20	144	35	42	46	6	11	4	124	20	0	0	0	5	2	0	0	0	1	1	0	0	4	0	0	0	0	6	0	1	123	21
Mar-20	62	12	21	26	2	0	1	55	7	0	0	0	6	0	0	0	0	0	0	0	0	1	0	0	0	0	0	0	0	59	3
Apr-20	40	9	15	14	0	2	0	28	12	0	0	0	12	0	0	0	0	0	0	0	0	0	0	0	0	0	0	0	0	38	2
May-20	39	8	12	19	0	0	0	31	8	0	0	0	8	0	0	0	0	0	0	0	0	0	0	0	0	0	0	0	0	39	0
Jun-20	38	8	12	18	0	0	0	32	6	0	0	0	6	0	0	0	0	0	0	0	0	0	0	0	0	0	0	0	0	38	0
TOTAL	1619	307	415	465	200	212	20	1141	484	1	0	5	127	19	1	1	1	10	12	0	0	117	158	50	3	0	54	25	12	1187	432
CFC #03 Child & Family Connections, Regional Office of Education for Carroll, Jo Daviess, & Stephenson Co., 27 S State Ave, Ste 101, Freeport, IL 61032 - Angela Hodges																															
Jul-19	284	162	54	23	28	17	0	264	21	0	0	0	1	0	0	0	0	0	0	0	7	1	0	0	0	0	0	0	1	239	45
Aug-19	352	168	63	34	50	37	0	290	62	0	0	0	4	1	1	0	0	0	1	0	8	3	19	5	0	0	1	0	2	265	87
Sep-19	304	150	43	26	46	39	0	226	78	0	0	3	1	1	0	0	0	0	1	0	11	1	43	6	0	0	0	0	1	219	85

Screenings Reported by CFC/CPS/DCFS and Month / FY2020 Year End

Month	Total Screened	Ages (in Months)						Not Referred	Total Referred	Screenings of Children involved with DCFS			# of Children Ages 0 to 3 Referred to								# of Children Ages 3 to 5 Referred to					Sub-Totals						
		0-11	12-23	24-35	36-47	48-60	61+			In Intact Family Services	Children of Teen Wards	In Foster Care	EI	LEA (ECSE)	EHS	PI (center-based)	Child Care Program	HV	Other Services	Multiple Services	Rescreening	LEA (ECSE)	PFA	HS	Child Care Program	Other HV Services	Multiple Services	Rescreening	Ages 0-35 mos.	Ages 36-61+ mos.		
Oct-19	457	196	65	42	56	89	9	418	39	0	0	0	4	0	0	0	0	0	0	0	11	2	7	0	0	0	0	10	303	154		
Nov-19	238	145	39	18	18	18	0	203	35	0	0	0	1	0	0	0	0	0	0	0	14	0	6	4	0	0	1	0	202	36		
Dec-19	373	163	75	39	44	49	3	343	30	0	0	1	2	0	0	0	0	0	0	7	3	14	0	0	0	0	1	3	277	96		
Jan-20	448	221	84	71	49	22	1	393	55	0	0	2	11	1	0	0	0	0	0	18	0	18	1	0	0	0	0	376	72			
Feb-20	316	155	55	39	45	22	0	271	45	0	0	0	6	1	0	0	0	0	0	19	4	6	1	0	0	1	0	249	67			
Mar-20	265	163	48	25	19	9	1	240	25	0	0	0	3	0	0	0	0	0	0	13	1	7	0	0	0	1	1	0	236	29		
Apr-20	82	72	7	1	1	1	0	72	10	0	0	0	3	0	0	0	0	0	0	7	0	0	0	0	0	0	0	80	2			
May-20	14	8	1	5	0	0	0	12	2	0	0	0	0	0	0	0	0	0	0	0	0	0	0	0	0	0	0	14	0			
TOTAL	3133	1603	534	323	356	303	14	2732	402	0	0	6	36	4	1	0	0	0	0	2	0	115	15	120	17	0	0	4	2	19	2460	673

CFC #04 Child & Family Connections, DayOne PACT, 1551 E Fabyan Pkwy, Geneva, IL 60134 - Ellana Mavromatis

Jan-19	14	2	1	0	10	1	0	0	14	0	0	0	7	0	0	0	0	0	0	0	0	0	0	0	0	0	0	0	0	3	11
Feb-19	19	2	2	1	12	2	0	15	4	0	0	0	0	0	0	0	0	0	0	0	4	0	0	0	0	0	0	0	5	14	
Mar-19	23	7	3	0	7	6	0	18	5	0	0	0	1	0	0	0	0	0	0	0	4	0	0	0	0	0	0	0	10	13	
May-19	33	7	1	2	15	8	0	32	1	0	0	0	0	0	0	0	0	0	0	0	1	0	0	0	0	0	0	10	23		
Jun-19	94	13	13	7	40	21	0	62	32	0	0	0	1	0	0	0	0	0	0	0	14	16	0	0	0	0	13	14	33	61	
Jul-19	188	25	36	31	43	53	0	104	84	0	0	0	19	1	0	0	0	0	0	0	5	53	0	0	0	1	2	7	92	96	
Aug-19	578	16	22	22	228	286	2	299	279	0	0	0	9	1	0	0	0	0	1	0	1	41	193	0	0	0	20	14	34	60	516
Sep-19	556	38	94	115	148	160	1	371	185	0	0	0	35	2	0	0	0	0	2	0	3	35	98	0	0	0	8	5	6	247	309
Oct-19	486	47	73	95	172	98	1	283	203	0	0	2	30	0	0	0	0	0	2	0	12	34	101	0	0	0	14	12	22	215	271
Nov-19	266	41	39	34	95	56	1	173	93	0	0	1	16	0	0	0	0	0	0	0	37	33	0	0	0	0	4	11	114	152	
Dec-19	167	19	23	24	56	40	5	91	76	0	0	0	4	0	0	0	0	0	0	0	9	45	0	0	0	15	0	3	66	101	
Jan-20	280	30	38	42	105	58	7	145	135	0	0	2	6	0	0	0	0	6	0	1	0	29	73	0	0	0	10	8	21	110	170
Feb-20	240	14	35	62	77	57	4	144	96	0	0	0	17	5	0	0	0	6	0	4	2	26	31	0	0	0	5	1	6	111	138
Mar-20	45	4	6	7	21	6	1	29	16	0	0	0	5	0	0	0	0	0	0	0	3	3	0	0	0	0	0	5	17	28	
Apr-20	57	4	11	26	5	0	0	45	12	0	0	0	10	1	0	0	0	0	0	0	0	0	0	0	0	0	0	1	41	5	
May-20	36	1	2	3	15	14	1	13	23	0	0	0	0	4	0	0	0	0	0	0	1	18	0	0	0	0	0	0	6	30	
Jun-20	99	3	0	1	29	64	2	12	87	4	0	0	0	0	0	0	0	2	0	0	0	1	84	0	0	0	0	0	0	4	95
TOTAL	3181	273	399	472	1078	930	25	1836	1345	4	0	5	160	14	0	0	0	14	5	5	18	251	748	0	0	0	73	59	130	1144	2033

CFC #05 Child & Family Connections, DayOne PACT, 750 Warrenville Rd, Ste 300, Lisle, IL 60532 - Marianne McGuire

Jun-19	20	10	6	4	0	0	0	20	0	0	0	0	0	0	0	0	0	0	0	0	0	0	0	0	0	0	0	0	0	20	0
Jul-19	70	16	22	27	2	1	2	30	40	0	0	0	18	2	0	0	0	5	4	0	11	0	0	0	0	0	0	0	65	5	
Aug-19	226	6	8	21	92	99	0	44	182	0	0	1	7	8	0	0	0	2	4	0	4	24	110	5	6	0	1	5	6	35	191

Screenings Reported by CFC/CPS/DCFS and Month / FY2020 Year End

Month	Total Screened	Ages (in Months)						Not Referred	Total Referred	Screenings of Children involved with DCFS			# of Children Ages 0 to 3 Referred to							# of Children Ages 3 to 5 Referred to					Sub-Totals						
		0-11	12-23	24-35	36-47	48-60	61+			In Intact Family Services	Children of Teen Wards	In Foster Care	EI	LEA (ECSE)	EHS	PI (center-based)	Child Care Program	HV	Other Services	Multiple Services	Rescreening	LEA (ECSE)	PFA	HS	Child Care Program	HV	Other Services	Multiple Services	Rescreening	Ages 0-35 mos.	Ages 36-61+ mos.
May-20	56	1	1	15	17	20	2	51	5	0	0	0	0	1	0	0	0	0	0	0	2	2	0	0	0	0	0	0	0	17	39
TOTAL	1500	20	30	250	632	538	30	511	989	1	0	4	47	47	0	0	0	11	7	0	7	286	425	0	0	5	118	4	35	300	1200
CFC #07 Child & Family Connections, Suburban Access, Inc. One Westbrook Corporate Ctr. Ste 640, Westchester, IL 60154 - Jo Ann Alferink																															
Aug-19	93	0	0	2	48	43	0	0	93	0	0	0	0	2	0	0	0	0	0	0	29	62	0	0	0	0	0	0	0	2	91
Sep-19	28	0	0	0	12	16	0	0	28	0	0	0	0	0	0	0	0	0	0	0	8	20	0	0	0	0	0	0	0	0	28
Oct-19	38	0	1	1	18	18	0	0	38	0	0	0	0	1	0	0	0	1	0	0	9	25	0	0	0	2	0	0	2	36	
Nov-19	4	0	2	2	0	0	0	0	4	0	0	0	3	0	0	0	0	2	0	0	0	0	0	0	0	0	0	0	4	0	
TOTAL	163	0	3	5	78	77	0	0	163	0	0	0	3	3	0	0	0	3	0	0	46	107	0	0	0	2	0	0	8	155	
CFC #08 Child & Family Connections, Easter Seals of Metropolitan Chicago, 9455 S Hoyne Ave, Chicago, IL 60643 - Marlene Stroube																															
Nov-19	0	0	0	0	0	0	0	0	0	0	0	0	0	0	0	0	0	0	0	0	0	0	0	0	0	0	0	0	0	0	0
Jan-20	0	0	0	0	0	0	0	0	0	0	0	0	0	0	0	0	0	0	0	0	0	0	0	0	0	0	0	0	0	0	0
TOTAL	0	0	0	0	0	0	0	0	0	0	0	0	0	0	0	0	0	0	0	0	0	0	0	0	0	0	0	0	0	0	0
CFC #12 Child & Family Connections, Easter Seals of Metropolitan Chicago, 17300 S Ozark Ave - North Bldg, Tinley Park, IL 60477 - Peter Byrne																															
Jul-19	35	0	0	0	23	11	1	32	3	0	0	0	0	0	0	0	0	0	0	0	3	0	0	0	0	0	0	0	0	35	
Aug-19	187	0	0	2	128	57	1	29	120	0	0	0	0	0	0	0	1	0	0	0	11	76	2	4	0	15	2	17	2	186	
Sep-19	590	23	28	59	231	229	20	435	155	0	0	1	4	0	0	0	25	0	1	0	3	96	0	0	0	6	9	31	110	480	
Oct-19	155	10	18	20	67	37	3	75	70	10	0	1	1	1	0	0	19	0	0	0	15	36	0	0	0	5	1	4	48	107	
Nov-19	210	0	0	0	75	101	34	194	16	0	0	0	0	0	0	0	0	0	0	3	1	0	0	0	0	1	11	0	210		
Dec-19	85	4	4	5	35	27	10	47	36	0	0	0	0	0	0	3	0	0	0	5	22	0	0	0	6	3	3	13	72		
Jan-20	155	1	1	20	58	53	23	86	23	0	0	0	0	0	0	0	2	0	0	0	2	16	0	0	0	0	0	16	22	134	
Feb-20	68	3	7	9	32	8	1	23	39	0	0	0	0	0	0	12	0	0	0	4	9	0	0	0	7	0	6	19	41		
Mar-20	33	2	0	7	16	8	0	23	10	0	0	0	0	0	0	0	0	0	0	2	0	0	0	0	6	0	2	9	24		
May-20	17	1	6	9	1	0	0	17	0	0	0	0	0	0	0	0	0	0	0	0	0	0	0	0	0	0	0	0	16	1	
TOTAL	1535	44	64	131	666	531	93	961	472	10	0	2	5	1	0	0	62	0	1	0	45	259	2	4	0	45	16	90	239	1290	
CFC #13 Child & Family Connections, Regional Office of Education #26, 130 S Lafayette St, Ste 200, Macomb, IL 61455 - Chuck Farr																															
May-19	32	0	0	0	22	10	0	0	32	0	0	2	0	0	0	0	0	0	0	0	3	29	0	0	0	0	0	0	0	32	
Jun-19	92	0	0	12	36	36	8	0	0	0	0	0	0	0	0	0	0	0	0	0	0	0	0	0	0	0	0	24	12	80	
Jul-19	84	3	7	21	39	15	0	36	25	5	0	2	5	0	0	0	0	2	0	3	0	9	0	0	0	0	2	10	31	54	
Aug-19	378	5	10	30	202	31	3	22	15	3	0	2	1	0	0	0	0	0	0	10	0	12	0	0	0	0	0	95	45	236	
Sep-19	289	2	6	16	101	145	19	7	8	0	0	0	2	0	0	0	0	1	0	5	0	1	0	0	0	0	0	90	24	265	
Oct-19	386	5	3	11	122	198	47	15	7	0	0	0	0	0	0	0	0	0	0	2	0	7	0	0	0	0	0	85	19	367	

Screenings Reported by CFC/CPS/DCFS and Month / FY2020 Year End

Month	Total Screened	Ages (in Months)						Not Referred	Total Referred	Screenings of Children involved with DCFS			# of Children Ages 0 to 3 Referred to								# of Children Ages 3 to 5 Referred to						Sub-Totals						
		0-11	12-23	24-35	36-47	48-60	61+			In Intact Family Services	Children of Teen Wards	In Foster Care	EI	LEA (ECSE)	EHS	PI (center-based)	Child Care Program	HV	Other Services	Multiple Services	Rescreening	LEA (ECSE)	PFA	HS	Child Care Program	Other HV Services	Multiple Services	Rescreening	Ages 0-35 mos.	Ages 36-61+ mos.			
Nov-19	239	5	8	17	81	94	34	16	9	1	0	1	2	0	0	0	0	0	0	4	0	3	1	2	0	0	0	0	0	0	33	30	209
Dec-19	51	7	3	4	28	7	2	14	7	0	0	0	0	0	0	0	0	0	0	0	0	0	0	0	0	0	0	0	0	8	14	37	
Jan-20	113	5	11	16	50	29	2	34	9	0	0	1	0	0	0	0	0	0	0	4	0	28	0	5	0	0	0	0	0	0	32	81	
Feb-20	229	78	40	17	62	25	7	132	18	121	0	2	13	0	0	0	0	0	0	0	0	0	1	1	0	0	0	0	0	31	135	94	
Mar-20	193	85	19	11	60	18	0	100	17	114	0	0	9	0	0	0	0	0	0	0	0	0	0	8	0	0	0	0	0	18	115	78	
Apr-20	115	70	23	7	0	0	0	3	15	106	0	0	15	0	0	0	0	0	0	0	0	0	0	0	0	0	0	0	0	100	0		
May-20	7	1	4	2	0	0	0	7	0	0	0	0	0	0	0	0	0	0	0	0	0	0	0	0	0	0	0	0	0	7	0		
Jun-20	144	100	38	2	0	0	0	3	4	0	0	0	4	0	0	0	0	0	0	0	0	0	0	0	0	0	0	0	0	140	0		
TOTAL	2352	366	172	166	803	608	122	389	166	350	0	10	51	0	0	0	0	0	0	11	0	64	5	81	0	0	0	0	0	2	394	704	1533

CFC #14 Child & Family Connections, 3000 W Rohmann Ave., West Peoria, IL 61604 - Michelle Harr

Sep-18	11	0	0	0	2	9	0	4	7	0	0	0	0	0	0	0	0	0	0	0	0	0	0	0	0	0	0	0	0	0	0	11
Feb-19	14	0	0	2	7	4	1	6	8	0	0	0	0	0	0	0	0	0	0	0	0	0	6	0	0	0	0	0	0	2	2	12
Mar-19	18	0	0	2	9	5	2	6	12	0	0	0	0	0	0	0	0	0	0	0	0	0	12	0	0	0	0	0	0	2	16	
Jul-19	72	2	3	8	38	21	0	13	59	0	0	1	2	0	0	5	0	0	0	0	0	0	6	45	0	0	0	1	0	13	59	
Aug-19	328	9	16	31	126	124	22	83	245	5	0	2	5	6	0	18	0	1	0	0	0	3	26	196	0	0	0	16	1	30	56	272
Sep-19	191	9	10	22	80	66	4	68	123	4	0	8	0	8	0	8	0	2	2	1	3	23	46	0	0	0	9	0	23	41	150	
Oct-19	97	8	10	15	46	15	3	40	57	0	0	5	0	0	0	4	0	0	2	0	1	10	13	0	0	0	13	0	10	33	64	
Nov-19	140	9	7	18	50	48	8	62	78	3	0	13	0	0	0	11	0	0	0	0	2	18	30	0	0	0	14	0	3	34	106	
Dec-19	67	1	2	14	30	16	4	8	59	0	0	6	0	2	0	5	0	0	0	0	4	8	30	0	0	0	10	1	2	17	50	
Jan-20	120	4	9	19	51	28	9	62	58	2	0	4	3	2	0	6	0	0	0	0	1	22	15	0	0	0	5	0	4	32	88	
Feb-20	141	7	19	20	70	22	3	74	67	0	0	0	3	1	0	3	0	0	1	0	0	24	27	0	0	0	0	0	8	46	95	
Mar-20	39	2	8	9	13	7	0	18	21	0	0	2	0	0	0	3	0	0	0	0	0	3	13	0	0	0	0	0	2	19	20	
Apr-20	10	1	5	4	0	0	0	8	2	0	0	0	2	0	0	0	0	0	0	0	0	0	0	0	0	0	0	0	0	10	0	
May-20	30	1	3	8	17	1	0	15	15	0	0	0	0	0	0	0	0	0	0	0	1	2	9	0	0	0	3	0	0	12	18	
Jun-20	23	3	3	6	11	0	0	14	9	0	0	0	0	0	0	0	0	0	0	0	0	0	7	0	0	0	2	0	0	12	11	
TOTAL	1301	56	95	178	550	366	56	481	820	14	0	41	15	19	0	63	0	3	5	1	15	167	431	0	0	0	73	2	84	329	972	

CFC #15 Child & Family Connections, Services of Will, Grundy, & Kankakee Counties, Inc., 2300 Glenwood Ave, Joliet, IL 60435 - Rachel Cimino

Jul-19	126	23	24	19	40	20	0	75	51	0	0	0	14	0	0	0	0	0	0	0	0	4	31	0	0	0	1	0	1	66	60
Aug-19	678	27	35	64	312	237	3	181	497	3	0	0	12	0	0	0	2	0	2	0	5	67	368	0	0	0	14	0	27	126	552
Sep-19	848	25	41	86	350	318	28	394	454	0	0	4	10	3	0	0	0	0	0	0	0	97	240	0	23	0	20	0	61	152	696
Oct-19	532	14	15	34	220	242	7	283	249	0	0	0	6	0	0	0	0	1	0	0	0	46	140	0	0	0	13	0	43	63	469
Nov-19	335	25	49	55	110	87	9	207	128	0	0	2	18	1	0	0	0	0	0	0	0	30	38	0	19	0	9	2	11	129	206

Screenings Reported by CFC/CPS/DCFS and Month / FY2020 Year End

Month	Total Screened	Ages (in Months)						Not Referred	Total Referred	Screenings of Children involved with DCFS			# of Children Ages 0 to 3 Referred to								# of Children Ages 3 to 5 Referred to					Sub-Totals					
		0-11	12-23	24-35	36-47	48-60	61+			In Intact Family Services	Children of Teen Wards	In Foster Care	EI	LEA (ECSE)	EHS	PI (center-based)	Child Care Program	HV	Other Services	Multiple Services	Rescreening	LEA (ECSE)	PFA	HS	Child Care Program	Other HV Services	Multiple Services	Rescreening	Ages 0-35 mos.	Ages 36-61+ mos.	
Dec-19	251	8	16	27	94	95	11	141	110	0	0	0	1	1	0	0	0	0	0	0	0	43	43	1	0	0	5	0	16	51	200
Jan-20	436	19	25	48	163	156	25	248	188	0	0	4	14	4	0	0	0	0	1	0	1	45	81	1	0	0	11	0	30	92	344
Feb-20	456	15	30	47	182	138	44	214	242	1	0	1	8	1	0	0	0	0	0	0	5	61	124	0	0	0	8	0	35	92	364
Mar-20	189	12	13	39	72	42	11	119	70	0	0	0	2	0	9	0	0	0	0	0	2	22	16	10	0	3	0	6	64	125	
Apr-20	50	12	19	19	0	0	0	48	2	0	0	0	2	0	0	0	0	0	0	0	0	0	0	0	0	0	0	0	50	0	
May-20	23	7	10	6	0	0	0	18	5	0	0	0	5	0	0	0	0	0	0	0	0	0	0	0	0	0	0	0	23	0	
Jun-20	86	10	9	23	31	12	1	40	46	0	0	0	0	0	0	0	0	0	0	0	0	46	0	0	0	0	0	0	42	44	
TOTAL	4010	197	286	467	1574	1347	139	1968	2042	4	0	11	92	10	9	0	2	1	3	0	11	395	1133	18	52	0	84	2	230	950	3060

CFC #16 Child & Family Connections, 201 W Springfield Ave. Ste 508 & 509, Champaign, IL 61820 - Chris Johnson

Jul-19	84	39	15	7	14	9	0	71	13	2	0	0	0	1	0	0	0	0	0	0	8	4	0	0	0	0	0	0	61	23	
Aug-19	420	38	18	19	239	106	0	100	320	2	0	2	11	2	0	0	0	0	1	0	6	51	233	0	13	0	3	6	6	75	345
Sep-19	178	33	36	24	43	41	1	129	49	0	0	1	3	0	0	0	0	0	0	0	2	13	33	0	0	0	0	6	4	93	85
Oct-19	215	59	54	43	29	30	0	181	34	2	0	0	7	1	0	0	0	0	2	0	1	3	23	0	0	0	1	4	0	156	59
Nov-19	161	22	37	16	63	22	1	91	70	0	0	1	2	0	0	0	0	0	0	0	8	63	0	0	0	6	4	1	75	86	
Dec-19	108	31	28	16	17	16	0	92	16	0	0	2	1	0	0	0	0	0	1	0	2	13	0	0	0	0	1	0	75	33	
Jan-20	243	80	63	27	50	22	1	185	58	0	0	1	9	0	0	0	0	0	0	0	5	10	29	0	7	0	0	2	0	170	73
Feb-20	490	71	50	76	187	87	19	257	232	2	0	5	9	3	2	0	0	3	32	7	27	23	139	0	0	3	20	12	4	197	293
Mar-20	354	60	40	16	138	90	10	165	189	2	0	5	8	0	0	0	0	2	1	1	1	33	145	0	10	0	15	14	0	116	238
Apr-20	140	47	36	25	15	17	0	132	8	0	0	2	3	0	0	0	0	0	0	0	5	0	0	0	0	0	0	0	108	32	
May-20	114	32	40	15	15	12	0	105	9	0	0	6	3	0	0	0	0	2	0	0	4	0	0	0	0	0	0	0	87	27	
Jun-20	118	38	44	20	8	8	0	95	23	0	0	0	3	0	0	0	0	1	0	1	20	0	0	0	0	0	0	0	102	16	
TOTAL	2625	550	461	304	818	460	32	1603	1021	10	0	25	59	7	2	0	0	8	37	9	71	151	682	0	30	3	45	49	15	1315	1310

CFC #17 Child & Family Connections, ROE of Adams/Pike Counties, 510 Maine St. Ste 615, Quincy, IL 62301 - Kara Hoffman

Jun-19	10	3	3	4	0	0	0	10	0	0	0	0	0	0	0	0	0	0	0	0	0	0	0	0	0	0	0	0	10	0	
Aug-19	145	6	9	39	55	36	0	118	27	5	0	1	2	0	0	0	0	0	0	0	2	3	0	0	0	0	0	0	22	54	91
Sep-19	307	4	8	21	138	130	6	248	59	7	0	3	0	0	0	0	0	0	2	0	0	4	2	0	0	0	3	0	53	33	274
Oct-19	151	2	6	15	50	50	9	132	19	6	0	1	0	0	0	0	0	0	0	0	1	1	0	0	0	0	0	0	17	23	109
Nov-19	128	3	8	13	29	57	18	116	12	0	0	1	0	0	0	0	0	0	0	0	1	1	0	0	0	0	0	0	10	24	104
Dec-19	56	4	12	16	23	1	0	44	12	0	0	0	0	0	0	0	0	0	0	0	1	1	0	0	0	0	0	0	10	32	24
Jan-20	80	0	4	19	34	17	6	72	8	2	0	1	1	0	0	0	0	0	0	0	1	1	0	0	0	0	0	0	5	23	57
Feb-20	99	0	6	11	38	33	11	88	11	1	0	1	0	0	0	0	0	0	0	0	2	0	0	0	0	0	0	0	9	17	82

Screenings Reported by CFC/CPS/DCFS and Month / FY2020 Year End

Month	Total Screened	Ages (in Months)						Not Referred	Total Referred	Screenings of Children involved with DCFS			# of Children Ages 0 to 3 Referred to								# of Children Ages 3 to 5 Referred to					Sub-Totals						
		0-11	12-23	24-35	36-47	48-60	61+			In Intact Family Services	Children of Teen Wards	In Foster Care	EI	LEA (ECSE)	EHS	PI (center-based)	Child Care Program	HV	Other Services	Multiple Services	Rescreening	LEA (ECSE)	PFA	HS	Child Care Program	Other HV Services	Multiple Services	Rescreening	Ages 0-35 mos.	Ages 36-61+ mos.		
May-20	2	0	0	0	2	0	0	0	0	2	0	1	0	0	0	0	0	0	0	0	2	0	0	0	0	0	0	0	0	0	0	2
TOTAL	103	7	18	11	53	13	1	26	75	2	0	4	6	2	0	0	0	0	0	1	0	4	8	50	0	0	0	7	6	5	36	67
CFC #21 Child & Family Connections, Regional Office of Education #13. 4 Eagle Center, Ste 4, O'Fallon, IL 62269 - Terri Kampwerth																																
Aug-19	711	129	146	137	169	116	11	564	109	7	0	5	6	0	33	2	0	0	0	0	17	18	126	58	8	0	26	9	11	412	296	
Sep-19	1320	132	190	262	311	352	68	1096	230	6	0	3	26	7	170	0	4	15	11	3	25	48	138	413	10	0	23	18	23	584	731	
Oct-19	710	96	106	88	171	203	44	583	127	0	0	1	16	1	47	0	0	1	0	0	77	34	74	265	2	0	2	17	42	290	418	
Nov-19	345	25	32	43	87	107	51	244	101	3	0	5	16	1	16	0	0	2	0	0	21	29	47	163	0	0	2	0	28	100	245	
Dec-19	391	96	88	78	64	52	11	344	40	5	0	4	9	1	13	0	0	0	1	0	7	13	13	64	0	0	4	4	14	262	127	
Jan-20	207	15	28	36	58	53	17	137	62	2	0	2	3	1	7	0	1	3	0	1	1	9	42	66	0	0	1	3	13	79	128	
Feb-20	82	7	10	14	31	18	2	31	51	1	0	0	2	0	0	0	0	2	8	2	3	5	33	0	0	0	10	2	0	31	51	
Mar-20	24	5	8	5	4	2	0	15	9	0	0	0	0	0	0	0	0	0	0	0	2	0	7	0	0	0	0	0	0	18	6	
Apr-20	59	1	1	4	35	18	0	20	34	1	0	1	0	0	0	0	0	1	0	0	0	2	33	0	0	0	0	5	1	6	53	
Jun-20	133	0	0	11	70	52	0	21	65	1	0	4	1	0	0	0	0	1	0	0	3	9	73	9	0	0	3	5	2	11	122	
TOTAL	3982	506	609	678	1000	973	204	3055	828	26	0	25	79	11	286	2	5	25	20	6	156	167	586	1038	20	0	71	63	134	1793	2177	
CFC #22 Child & Family Connections, Regional Office of Education #13. 660 W Noleman St. Centralia, IL 62801 - Nicole Van Hise																																
Jul-19	32	8	9	8	4	3	0	1	31	0	0	0	3	0	16	0	7	0	1	8	8	2	1	1	5	0	0	5	5	25	7	
Aug-19	172	16	18	23	52	63	0	2	166	0	0	0	6	0	7	0	3	37	8	3	4	5	83	1	25	0	1	25	25	57	115	
Sep-19	93	0	0	2	40	51	0	83	10	0	0	10	0	0	0	0	0	0	2	0	0	1	5	0	1	0	0	1	1	2	91	
Oct-19	49	11	9	5	15	7	2	26	23	0	0	5	1	0	0	0	0	8	0	0	0	0	14	0	0	0	0	0	0	25	24	
Nov-19	21	2	4	4	10	1	0	13	8	0	0	0	0	0	0	0	0	0	0	0	0	1	8	0	0	0	0	1	0	10	11	
Dec-19	40	7	7	13	9	4	0	36	4	0	0	2	3	0	0	0	0	0	0	0	0	0	1	0	0	0	0	0	0	27	13	
Jan-20	63	6	15	16	8	16	2	18	45	0	0	0	4	0	0	0	0	28	0	0	0	2	11	0	0	0	0	0	0	37	26	
Feb-20	206	5	7	60	82	38	14	186	20	1	0	5	0	0	1	0	0	8	1	0	0	1	3	0	0	0	5	4	1	72	134	
Mar-20	53	2	7	24	13	7	0	1	52	0	0	0	1	0	0	2	0	19	13	2	3	3	17	1	0	1	0	3	2	33	20	
Jun-20	20	4	4	12	0	0	0	0	20	0	0	0	0	0	0	0	0	20	0	0	0	0	0	0	0	0	0	0	0	20	0	
TOTAL	749	61	80	167	233	190	18	366	379	1	0	22	18	0	24	2	10	120	25	13	15	15	143	3	31	1	6	39	34	308	441	
CFC #23 Child & Family Connections, Wabash & Ohio Valley Special Education Dist., 800 S Division St. Norris City, IL 62869 - Charity Heifner																																
Jul-19	38	7	15	12	4	0	0	0	38	0	0	0	0	0	0	0	0	0	0	0	0	0	0	0	0	0	0	0	0	34	4	
Aug-19	425	56	56	62	129	118	4	238	187	0	0	0	18	0	0	0	7	0	7	4	15	2	123	0	34	0	45	6	43	174	251	
Sep-19	429	18	34	37	179	161	0	220	209	0	0	0	12	0	0	0	20	0	5	5	21	3	161	0	9	0	69	2	24	89	340	
Oct-19	202	19	17	27	79	60	0	121	72	0	0	0	6	0	0	0	0	0	2	0	6	0	58	2	0	0	26	7	5	63	139	
Nov-19	54	11	10	10	27	15	0	46	27	0	0	0	6	0	0	0	0	0	1	0	2	0	21	0	0	0	10	2	0	31	42	

Screenings Reported by CFC/CPS/DCFS and Month / FY2020 Year End

Month	Total Screened	Ages (in Months)						Not Referred	Total Referred	Screenings of Children involved with DCFS			# of Children Ages 0 to 3 Referred to								# of Children Ages 3 to 5 Referred to						Sub-Totals				
		0-11	12-23	24-35	36-47	48-60	61+			In Intact	Children In	Foster Care	LEA EI	LEA (ECSE)	EHS	PI (center-based)	Child Care Program	HV	Other Services	Multiple Services	Rescreening	LEA (ECSE)	PFA	HS	Child Care Program	HV	Other Services	Multiple Services	Rescreening	Ages 0-35 mos.	Ages 36-61+ mos.
Apr-20	22	4	8	9	1	0	0	0	22	0	0	0	21	0	0	0	0	0	0	0	0	1	1	0	0	0	0	1	0	21	1
May-20	24	8	5	11	0	0	0	0	24	0	0	0	24	0	0	0	0	0	0	0	0	0	0	0	0	0	0	0	24	0	
Jun-20	199	27	33	55	58	26	0	69	130	0	0	0	51	0	0	0	0	0	1	0	0	4	74	0	0	0	0	0	115	84	
TOTAL	1668	217	310	416	381	338	6	423	1245	0	1	4	702	10	0	0	0	0	11	3	0	124	380	0	0	2	12	11	9	943	725

Chicago Public Schools, Office of Diverse Learner Supports & Services, 42 W Madison St, 2nd Floor, Chicago, IL 60602 - Dr. Stephanie Jones

Jul-19	493	13	42	92	157	119	70	262	231	0	0	0	23	0	0	0	0	0	0	0	33	98	0	0	0	0	0	0	0	77	147	346
Aug-19	113	1	3	15	47	32	13	21	92	0	0	0	4	0	0	0	0	0	0	0	0	72	0	0	0	0	0	0	16	19	92	
Sep-19	536	4	32	74	212	139	75	367	169	0	0	0	7	0	0	0	0	0	0	0	30	78	0	0	0	0	0	0	54	110	426	
Oct-19	228	2	4	40	76	73	33	133	95	0	0	0	10	0	0	0	0	0	0	0	6	40	0	0	0	0	0	0	39	46	182	
Nov-19	536	17	66	102	141	139	71	351	185	0	0	4	12	0	0	0	0	0	0	0	31	67	0	0	0	0	0	0	75	185	351	
Dec-19	461	21	46	88	119	118	69	290	171	0	0	4	26	0	0	0	0	0	0	0	35	48	0	0	0	0	0	0	62	155	306	
Jan-20	635	19	60	112	173	153	118	428	207	0	0	5	12	0	0	0	0	0	0	0	36	56	0	0	0	0	0	0	103	191	444	
TOTAL	3002	77	253	523	925	773	449	1852	1150	0	0	13	94	0	0	0	0	0	0	0	171	459	0	0	0	0	0	0	0	426	853	2147

DCFS/Erikson Institute Statewide, 451 North LaSalle Street, Chicago, IL 60654 - Andria Goss

Sep-19	151	57	47	29	17	1	0	0	151	134	0	0	43	2	43	0	17	81	33	0	40	9	0	11	0	6	10	0	0	133	18
Dec-19	155	52	48	43	9	3	0	0	155	155	0	0	73	2	57	0	24	89	30	0	42	3	0	9	2	5	11	0	1	143	12
Mar-20	111	39	39	20	12	1	0	0	111	111	0	0	42	1	35	0	14	59	24	0	25	5	0	6	2	3	7	0	3	98	13
TOTAL	417	148	134	92	38	5	0	0	417	400	0	0	158	5	135	0	55	229	87	0	107	17	0	26	4	14	28	0	4	374	43

Screenings Reported by CFC/CPS/DCFS and Agencies Represented / FY2020 Year End

Agency Type	Total Screened	Ages (in Months)						Not Referred	Total Referred	Screenings of Children involved with DCFS			# of Children Ages 0 to 3 Referred to								# of Children Ages 3 to 5 Referred to					Sub-Totals						
		0-11	12-23	24-35	36-47	48-60	61+			In Intact Family Services	Children of Teen Wards	In Foster Care	LEA EI	LEA (ECSE)	PI (center-based)	Child Care Program	HV	Other Services	Multiple Services	Rescreening	LEA (ECSE)	PFA	HS	Child Care Program	Other HV Services	Multiple Services	Rescreening	Ages 0-35 mos.	Ages 36-61+ mos.			
CFC #01 Child & Family Connections, Youth Services Network, Inc., 107 North 3rd Street, Rockford, IL 61107 - Dee Dee Lowery																																
CC	97	27	30	40	0	0	0	97	0	0	0	0	0	0	0	0	0	0	0	0	0	0	0	0	0	0	0	0	97	0		
EI	0	0	0	0	0	0	0	0	0	0	0	0	0	0	0	0	0	0	0	0	0	0	0	0	0	0	0	0	0	0		
HS/EHS	495	92	119	157	79	43	5	339	156	7	0	14	6	0	0	0	0	0	0	0	0	0	0	0	0	0	0	14	368	127		
HV	128	28	49	49	2	0	0	36	92	0	0	0	2	0	0	0	0	0	0	0	0	0	0	0	0	0	0	0	126	2		
LEA	3909	131	192	362	1796	1130	298	1761	2148	21	1	57	19	25	0	32	0	0	20	1	21	172	1674	216	38	0	146	792	701	685	3224	
PAT	31	2	14	14	1	0	0	16	15	0	0	0	1	0	0	0	0	0	0	0	0	0	0	0	0	0	0	0	30	1		
PI	0	0	0	0	0	0	0	0	0	0	0	0	0	0	0	0	0	0	0	0	0	0	0	0	0	0	0	0	0	0		
CFC #02 Child & Family Connections, Lake County Health Department, 3010 Grand Ave, 2nd Floor, Waukegan, IL 60085 - Donna Musser																																
CFC	1172	307	415	448	2	0	0	1029	143	1	0	4	127	13	1	1	1	10	11	0	0	0	0	0	0	0	0	0	0	1170	2	
EI	1172	307	415	448	2	0	0	1029	143	1	0	4	127	13	1	1	1	10	11	0	0	0	0	0	0	0	0	0	0	1170	2	
HS/EHS	9	0	0	0	5	4	0	0	9	0	0	0	0	0	0	0	0	0	0	0	0	0	0	0	0	0	0	0	0	0	9	
LEA	438	0	0	17	193	208	20	112	332	0	0	1	0	6	0	0	0	0	1	0	0	108	158	50	3	0	54	25	12	17	421	
CFC #03 Child & Family Connections, Regional Office of Education for Carroll, Jo Daviess, & Stephenson Co., 27 S State Ave, Ste 101, Freeport, IL 61032 - Angela Hodges																																
CC	1689	882	357	173	136	141	0	1618	71	0	0	1	0	0	0	0	0	0	0	0	0	0	0	0	0	0	0	0	0	3	1412	277
FCM	1608	873	342	163	117	113	0	1540	68	0	0	0	0	0	0	0	0	0	0	0	0	0	0	0	0	0	0	0	0	1378	230	
HD	974	682	144	94	39	15	0	823	151	0	0	0	33	0	0	0	0	0	0	0	0	0	0	0	0	0	0	0	1	920	54	
HS/EHS	19	0	2	2	9	6	0	16	3	0	0	0	0	0	0	0	0	0	0	0	0	2	0	0	0	0	0	0	1	4	15	
HV	102	32	30	32	8	0	0	98	4	0	0	0	3	0	0	0	0	0	1	0	0	0	0	0	0	0	0	0	94	8		
LEA	394	23	13	38	165	141	14	222	173	0	0	5	0	4	1	0	0	0	1	0	1	13	120	17	0	0	4	2	14	74	320	
WIC	1608	873	342	163	117	113	0	1540	68	0	0	0	0	0	0	0	0	0	0	0	0	0	0	0	0	0	0	0	1378	230		
CFC #04 Child & Family Connections, DayOne PACT, 1551 E Fabyan Pkwy, Geneva, IL 60134 - Ellana Mavromatis																																
CC	101	13	27	35	10	14	0	39	62	0	0	0	21	0	0	0	0	0	2	0	15	0	24	0	0	0	2	0	0	75	24	
CFC	290	31	88	116	39	14	2	186	104	0	0	0	84	14	0	0	0	0	0	0	0	6	0	0	0	0	0	0	0	235	55	
HC	8	3	0	1	2	1	1	5	3	4	0	0	0	0	0	0	0	2	0	0	0	0	1	0	0	0	0	0	4	4		
HD	49	3	16	27	6	3	3	45	4	0	0	0	1	0	0	0	0	0	0	0	0	0	0	0	0	0	0	0	46	12		
HFI	2	2	0	0	0	0	0	2	0	0	0	0	0	0	0	0	0	0	0	0	0	0	0	0	0	0	0	0	2	0		
HS/EHS	344	57	48	64	110	63	2	243	101	0	0	0	34	0	0	0	0	0	2	0	15	50	0	0	0	0	0	0	169	175		
HV	695	151	170	188	121	63	2	607	88	0	0	0	34	0	0	0	0	7	0	3	0	50	0	0	0	0	0	0	509	186		
LEA	1808	13	17	36	886	828	17	739	1069	0	0	2	7	0	0	0	0	4	3	1	3	195	723	0	0	0	69	59	130	66	1731	
MFP	63	9	11	23	13	7	0	56	7	0	0	3	5	0	0	0	0	1	0	1	0	0	0	0	0	0	2	0	43	20		

Screenings Reported by CFC/CPS/DCFS and Agencies Represented / FY2020 Year End

Agency Type	Total Screened	Ages (in Months)							Not Referred	Total Referred	Screenings of Children involved with DCFS										# of Children Ages 0 to 3 Referred to								# of Children Ages 3 to 5 Referred to						Sub-Totals	
		0-11	12-23	24-35	36-47	48-60	61+	In Intact Family Services			Children of Teen Wards	In Foster Care	LEA EI	LEA (ECSE)	PI (EHS)	Child Care Program	HV	Other Services	Multiple Services	Rescreening	LEA (ECSE)	PFA	HS	Child Care Program	HV	Other Services	Multiple Services	Rescreening	Ages 0-35 mos.	Ages 36-61+ mos.						
CFC #14 Child & Family Connections, 3000 W Rohmann Ave., West Peoria, IL 61604 - Michelle Harr																																				
CC	35	6	5	6	9	9	0	31	4	2	0	1	3	0	0	0	0	0	0	0	0	0	0	0	0	0	0	0	0	0	0	0	0	0	17	18
CFC	21	5	11	3	2	0	0	12	9	4	0	0	3	2	0	0	0	0	3	0	0	1	0	0	0	0	0	0	0	0	0	0	0	19	2	
HS/EHS	23	6	9	4	3	1	0	19	4	0	0	0	0	0	0	0	0	0	0	0	0	0	0	0	0	0	0	0	0	0	0	0	19	4		
HV	42	12	17	11	2	0	0	30	12	0	0	0	1	0	0	11	0	0	0	0	0	0	0	0	0	0	0	0	0	0	0	0	40	2		
LEA	1081	25	52	145	489	315	55	323	758	8	0	40	8	17	0	52	0	0	5	1	14	166	375	0	0	0	67	2	57	222	859					
MFP	88	0	0	0	46	41	1	55	33	0	0	0	0	0	0	0	0	0	0	0	0	0	56	0	0	0	6	0	27	0	88					
PAT	16	3	2	10	1	0	0	16	0	0	0	0	0	0	0	0	0	0	0	0	0	0	0	0	0	0	0	0	0	0	15	1				
CFC #15 Child & Family Connections, Services of Will, Grundy, & Kankakee Counties, Inc., 2300 Glenwood Ave, Joliet, IL 60435 - Rachel Cimino																																				
CC	163	6	22	32	32	68	3	136	27	0	0	0	7	0	0	0	0	0	0	0	0	3	0	0	0	0	0	1	0	16	60	103				
CFC	6	1	1	4	0	0	0	4	2	0	0	0	1	0	0	0	0	0	1	0	0	0	0	0	0	0	0	0	0	0	0	6	0			
EI	34	3	16	12	3	0	0	26	8	0	0	1	3	0	0	0	0	0	0	0	4	0	0	0	0	0	1	0	0	31	3					
HS/EHS	82	0	0	0	53	27	2	70	12	0	0	0	0	0	0	0	0	0	0	0	3	0	0	0	0	0	0	0	9	0	82					
HV	601	176	236	189	0	0	0	524	77	0	0	1	77	0	0	0	0	0	0	0	0	0	0	0	0	0	0	0	0	601	0					
LEA	3124	11	11	230	1486	1252	134	1208	1916	4	0	9	4	10	9	0	2	1	2	0	7	389	1133	18	52	0	82	2	205	252	2872					
CFC #16 Child & Family Connections, 201 W Springfield Ave, Ste 508 & 509, Champaign, IL 61820 - Chris Johnson																																				
CFC	12	0	5	7	0	0	0	0	12	0	0	0	1	1	0	0	0	0	0	0	0	0	0	0	0	0	0	0	0	0	0	12	0			
EI	144	36	37	30	20	21	0	59	85	0	0	10	28	0	0	0	0	8	0	1	47	0	0	0	0	3	0	0	0	103	41					
FCM	1106	360	363	162	102	119	0	1092	14	0	0	0	14	0	0	0	0	0	0	0	0	0	0	0	0	0	0	0	0	885	221					
HC	217	0	0	47	114	54	2	31	186	0	0	1	4	0	2	0	0	0	32	6	9	7	132	0	0	0	9	9	6	47	170					
HD	484	154	51	71	133	73	2	290	194	0	0	1	12	0	2	0	0	0	32	6	9	7	132	0	0	0	9	9	6	276	208					
HFI	0	0	0	0	0	0	0	0	0	0	0	0	0	0	0	0	0	0	0	0	0	0	0	0	0	0	0	0	0	0	0	0				
HV	74	0	3	2	50	16	3	6	68	0	0	1	0	0	0	0	0	0	0	0	0	6	62	0	0	0	18	2	0	5	69					
LEA	805	0	2	32	513	231	27	156	648	10	0	13	4	6	0	0	0	0	5	2	5	138	488	0	30	0	18	38	9	34	771					
MIECHV	69	0	0	0	50	16	3	1	68	0	0	1	0	0	0	0	0	0	0	0	0	6	62	0	0	0	18	2	0	0	69					
PI	0	0	0	0	0	0	0	0	0	0	0	0	0	0	0	0	0	0	0	0	0	0	0	0	0	0	0	0	0	0	0	0				
WIC	1106	360	363	162	102	119	0	1092	14	0	0	0	14	0	0	0	0	0	0	0	0	0	0	0	0	0	0	0	0	885	221					
CFC #17 Child & Family Connections, ROE of Adams/Pike Counties, 510 Maine St, Ste 615, Quincy, IL 62301 - Kara Hoffman																																				
HS/EHS	110	0	0	3	51	49	7	89	21	1	0	1	0	0	0	0	0	0	0	0	0	0	0	0	0	0	0	0	0	0	21	3	107			
HV	153	22	56	61	14	0	0	151	2	0	0	0	0	0	0	0	0	0	2	0	0	0	2	0	0	0	3	0	0	139	14					
LEA	821	0	0	103	356	295	48	675	146	20	0	7	3	0	0	0	0	0	0	0	11	13	0	0	0	0	0	0	121	103	699					

Screenings Reported by CFC/CPS/DCFS and Agencies Represented / FY2020 Year End

Agency Type	Total Screened	Ages (in Months)						Not Referred	Total Referred	Screenings of Children involved with DCFS			# of Children Ages 0 to 3 Referred to							# of Children Ages 3 to 5 Referred to					Sub-Totals						
		0-11	12-23	24-35	36-47	48-60	61+			In Intact Family Services	Children of Teen Wards	In Foster Care	LEA EI	LEA (ECSE)	EHS	PI (center-based)	Child Care Program	HV	Other Services	Multiple Services	Rescreening	LEA (ECSE)	PFA	HS	Child Care Program	HV	Other Services	Multiple Services	Rescreening	Ages 0-35 mos.	Ages 36-61+ mos.
		CFC #24 Child & Family Connections, Archway, Inc., 2751 W Main, PO Box 1180, Carbondale, IL 62901-1180 - Lindsay Baskin																													
CC	70	7	14	17	16	0	0	70	0	0	0	6	0	0	0	38	0	0	38	38	3	0	0	32	0	0	32	32	38	32	
CFC	41	1	1	15	14	9	1	14	27	0	0	2	2	7	0	0	0	0	0	0	12	0	4	0	0	0	0	0	17	24	
EI	14	0	0	6	3	4	1	14	0	0	0	0	0	0	0	0	0	0	0	0	0	0	0	0	0	0	0	6	8		
HS/EHS	212	0	0	0	94	114	4	207	5	0	0	2	0	0	0	0	0	0	0	0	2	0	0	0	0	0	0	0	0	212	
HV	384	125	96	122	32	9	0	306	44	1	0	0	0	0	35	0	40	0	0	0	0	0	0	0	0	0	0	343	41		
LEA	232	19	21	29	94	63	5	1	231	0	0	1	0	1	0	15	42	5	53	51	3	160	0	0	2	5	14	13	69	162	
CFC #25 Child & Family Connections, Options & Advocacy for McHenry Co., 365 Millennium Dr, Ste A, Crystal Lake, IL 60012 - Susan Beckman																															
CC	291	20	35	66	65	105	0	269	22	0	0	1	10	0	0	0	0	0	0	0	11	0	0	0	0	1	0	0	121	170	
CFC	696	183	249	260	2	2	0	9	687	0	0	0	685	0	0	0	0	2	0	0	0	0	0	0	0	0	0	0	692	4	
LEA	681	14	26	90	314	231	6	145	536	0	1	3	7	10	0	0	11	1	0	1	113	380	0	0	2	11	11	9	130	551	
Chicago Public Schools, Office of Diverse Learner Supports & Services, 42 W Madison St, 2nd Floor, Chicago, IL 60602 - Dr. Stephanie Jones																															
LEA	3002	77	253	523	925	773	449	1852	1150	0	0	13	94	0	0	0	0	0	0	171	459	0	0	0	0	0	0	0	426	853	2147
DCFS/Erikson Institute Statewide, 451 North LaSalle Street, , Chicago, IL 60654 - Andria Goss																															
DCFS	417	148	134	92	38	5	0	0	417	400	0	0	158	5	135	0	55	229	87	0	107	17	0	26	4	14	28	0	4	374	43

Screenings Reported by CFC/CPS/DCFS and Screening Tools Utilized / FY2020 Year End

Screening Tool	Total Screened	Ages (in Months)							Not Referred	Total Referred	Screenings of Children involved with DCFS			# of Children Ages 0 to 3 Referred to								# of Children Ages 3 to 5 Referred to															
		0-11	12-23	24-35	36-47	48-60	61+	In Intact Family Services			Children of Teen Wards	In Foster Care	LEA EI	LEA (ECSE)	EHS	PI (center-based)	Child Care Program	HV	Other Services	Multiple Services	Rescreening	LEA (ECSE)	PFA	HS	Child Care Program	Other HV Services	Multiple Services	Rescreening									
CFC #04	Child & Family Connections, DayOne PACT, 1551 E Fabyan Pkwy, Geneva, IL 60134 - Ellana Mavromatis																																				
ASQ	79	0	0	2	48	24	5	10	69	0	0	0	0	0	0	0	0	0	0	0	0	0	0	0	0	0	0	0	33	29	0	0	0	0	1	0	6
ASQ-3	2549	250	367	427	812	686	16	1561	988	4	0	5	156	14	0	0	0	9	5	2	17	186	532	0	0	0	19	56	110								
ASQ:SE	420	56	83	85	118	69	9	263	157	0	0	1	16	0	0	0	0	0	0	0	1	55	49	0	0	0	4	3	35								
ASQ:SE-2	746	104	149	149	211	128	5	462	284	0	0	1	37	0	0	0	0	11	4	4	15	94	102	0	0	0	0	54	82								
BAT	96	0	0	9	49	34	2	27	69	0	0	0	1	0	0	0	0	0	1	0	2	9	37	0	0	0	18	0	3								
BDI-2	35	0	0	0	16	18	1	16	19	0	0	0	0	0	0	0	0	0	0	0	0	19	0	0	0	0	0	3	3								
BRIG-3	267	0	0	0	164	100	3	83	184	0	0	0	0	0	0	0	0	0	0	0	0	84	90	0	0	0	0	54	64								
BRIG-PRF	9	0	0	0	7	1	1	1	8	0	0	0	0	0	0	0	0	0	0	0	0	0	3	0	0	0	0	0	5								
DIAL	73	0	0	0	38	22	2	61	12	0	0	0	0	0	0	0	0	0	0	0	0	11	0	0	0	0	0	0	1								
DIAL-4	346	44	21	29	136	114	2	282	64	0	0	0	13	0	0	0	0	0	0	0	0	51	0	0	0	0	0	0	0								
Play-Based	65	0	0	2	38	20	5	10	55	0	0	0	0	0	0	0	0	0	0	0	0	33	16	0	0	0	0	0	6								
PLS-5	75	0	0	0	45	28	2	38	37	0	0	1	0	0	0	0	0	0	0	0	0	10	12	0	0	0	0	0	18								
Speed DIAL-4	239	0	1	4	120	114	0	20	219	0	0	0	1	0	0	0	0	0	0	0	1	1	160	0	0	0	51	0	5								
CFC #05	Child & Family Connections, DayOne PACT, 750 Warrenville Rd, Ste 300, Lisle, IL 60532 - Marianne McGuire																																				
ASQ	97	0	0	0	53	44	0	27	70	0	0	0	0	0	0	0	0	0	0	0	5	55	8	0	0	3	1	0									
ASQ-3	971	134	221	319	165	130	2	442	529	2	0	1	108	45	0	1	0	41	23	8	142	51	99	5	0	0	2	6	19								
ASQ:SE	404	68	116	129	58	32	1	254	150	0	0	0	35	4	0	1	0	32	2	8	5	22	53	0	0	0	0	3									
ASQ:SE-2	248	41	60	95	32	20	0	42	206	2	0	1	31	13	0	0	0	9	17	0	95	15	17	0	0	0	1	3	5								
CIP	41	0	0	5	21	15	0	8	33	0	0	0	0	1	0	0	0	0	3	0	1	12	15	0	0	0	0	1									
DIAL	156	1	1	5	78	66	5	32	124	0	0	1	3	0	0	0	0	1	8	4	0	7	102	0	0	0	1	5	2								
DIAL-4	150	0	0	5	79	66	0	48	102	0	0	0	0	0	0	0	0	0	0	0	1	21	70	0	7	0	0	1	4								
Play-Based	7	0	0	1	5	1	0	5	2	0	0	0	0	0	0	0	0	0	0	0	0	2	0	0	0	0	0	0									
Speed DIAL-4	77	0	0	5	46	26	0	8	69	0	0	0	0	1	0	0	0	0	0	0	1	0	51	0	0	0	12	0	4								
CFC #06	Child & Family Connections, Clearbrook, 1835 W Central Rd, Arlington Heights, IL 60005 - Jason Tietz																																				
ASQ	70	0	0	9	39	20	2	19	51	0	0	0	0	2	0	0	0	0	0	3	0	13	25	0	0	0	9	1	0								
ASQ-2	32	0	0	0	15	17	0	20	12	0	0	0	0	0	0	0	0	0	0	0	0	0	0	0	0	0	6	0	6								
ASQ-3	742	18	21	160	304	231	8	297	445	0	0	1	36	8	0	0	0	11	2	0	0	134	192	0	0	5	58	1	0								
ASQ:SE	19	0	0	2	5	12	0	3	16	0	0	0	1	0	0	0	0	0	0	0	0	15	0	0	0	0	0	0									
ASQ:SE-2	404	18	21	59	181	120	5	193	211	0	0	1	8	0	0	0	0	11	2	0	0	6	129	0	0	5	50	0	0								
BAT	383	18	21	57	166	116	5	178	205	0	0	0	8	0	0	0	0	11	2	0	0	5	129	0	0	5	45	0	0								
BRIG	5	0	0	0	3	2	0	0	5	0	0	0	0	0	0	0	0	0	0	0	0	0	2	0	0	0	2	0	1								

Screenings Reported by CFC/CPS/DCFS and Screening Tools Utilized / FY2020 Year End

Screening Tool	Total Screened	Ages (in Months)							Not Referred	Total Referred	Screenings of Children involved with DCFS			# of Children Ages 0 to 3 Referred to								# of Children Ages 3 to 5 Referred to							
		0-11	12-23	24-35	36-47	48-60	61+	In Intact Family Services			Children of Teen Wards	In Foster Care	LEA EI	LEA (ECSE)	EHS	PI (center-based)	Child Care Program	HV	Other Services	Multiple Services	Rescreening	LEA (ECSE)	PFA	HS	Child Care Program	Other HV Services	Multiple Services	Rescreening	
Speed DIAL-4	57	0	0	0	44	13	0	0	57	8	0	2	0	0	0	0	0	0	0	0	0	4	53	0	0	0	0	0	0
CFC #14 Child & Family Connections, 3000 W Rohmann Ave., West Peoria, IL 61604 - Michelle Harr																													
ASQ	323	37	70	49	88	78	1	201	122	0	0	4	7	0	0	11	0	0	1	0	0	4	118	0	0	0	6	0	27
ASQ-3	113	19	25	25	23	21	0	93	20	6	0	1	7	2	0	0	0	3	0	0	1	5	0	0	0	0	0	2	
ASQ:SE	16	5	7	4	0	0	0	15	1	0	0	0	1	0	0	0	0	0	0	0	0	0	0	0	0	0	0	0	
ASQ:SE-2	19	6	9	4	0	0	0	15	4	0	0	0	0	0	0	0	0	0	0	0	0	0	0	0	0	0	0	0	
BRIG	197	20	45	38	46	46	2	115	82	0	0	6	6	3	0	0	0	0	3	1	0	7	62	0	0	0	1	0	1
BRIG-3	609	0	0	86	327	180	16	112	497	8	0	32	1	10	0	52	0	0	1	0	11	90	250	0	0	0	43	1	40
DIAL-4	110	0	0	13	42	48	7	52	58	0	0	2	0	4	0	0	0	0	0	0	2	29	14	0	0	0	0	1	10
ESI-R	97	0	0	2	66	28	1	12	85	0	0	0	0	0	0	0	0	0	1	0	1	21	49	0	0	0	11	0	2
HAPP-3	14	0	0	2	4	5	3	9	5	0	0	2	0	2	0	0	0	0	2	1	0	1	0	0	0	0	1	0	0
Hearing	179	20	45	35	42	37	0	106	73	0	0	4	6	0	0	0	0	0	1	0	0	4	62	0	0	0	0	0	0
PLS-4	89	0	0	0	46	41	2	56	33	0	0	0	0	0	0	0	0	0	0	0	0	0	56	0	0	0	6	0	27
SESI	26	0	0	0	0	0	26	10	16	0	0	0	0	0	0	0	0	0	0	0	0	0	0	0	0	0	12	0	4
TPBA-2	29	0	0	2	11	14	2	10	19	0	0	0	0	0	0	0	0	0	0	0	0	19	0	0	0	0	0	0	0
CFC #15 Child & Family Connections, Services of Will, Grundy, & Kankakee Counties, Inc., 2300 Glenwood Ave. Joliet, IL 60435 - Rachel Cimino																													
ASQ	209	5	21	24	103	54	2	40	169	0	0	1	6	0	0	0	0	0	1	0	5	28	123	0	0	0	5	0	1
ASQ-3	672	176	252	202	16	24	2	577	95	0	0	1	81	0	0	0	0	0	0	0	0	0	0	0	0	0	1	0	13
ASQ:SE	1615	0	1	36	742	749	87	1027	588	0	0	0	1	0	0	0	2	1	1	0	3	47	265	0	13	0	76	2	177
ASQ:SE-2	113	21	31	39	4	18	0	102	11	0	0	1	8	0	0	0	0	0	0	0	0	3	0	0	0	0	0	0	0
BRIG	1365	0	1	43	618	617	86	826	539	0	0	0	1	0	0	0	2	1	1	0	3	47	335	0	13	0	76	2	58
DIAL	173	1	4	2	98	65	3	6	167	0	0	0	2	0	0	0	0	0	0	0	0	47	74	0	39	0	0	0	5
DIAL-4	1316	10	6	179	629	446	46	265	1051	4	0	9	1	10	9	0	0	0	1	0	3	298	675	18	0	0	2	0	34
CFC #16 Child & Family Connections, 201 W Springfield Ave. Ste 508 & 509, Champaign, IL 61820 - Chris Johnson																													
ASQ	222	0	3	49	114	54	2	36	186	0	0	1	4	0	2	0	0	0	32	6	9	7	132	0	0	0	9	9	6
ASQ-3	1435	396	407	211	207	199	15	1209	226	3	0	13	47	1	0	0	0	8	0	1	62	12	87	0	0	3	19	2	6
ASQ:SE	1419	360	366	170	276	238	9	1124	295	1	0	8	14	3	0	0	0	0	5	2	0	59	253	0	0	0	18	40	1
BRIG	113	0	1	22	66	21	3	72	41	3	0	1	3	0	0	0	0	0	0	0	5	4	21	0	0	0	1	0	7
DIAL	76	0	0	0	59	14	3	2	73	2	0	3	0	0	0	0	0	0	0	0	0	6	67	0	0	0	14	0	1
DIAL-4	377	0	1	4	264	93	15	56	321	4	0	2	1	3	0	0	0	0	0	0	0	75	209	0	30	0	3	0	0
ESI-R	239	0	0	6	124	103	6	26	213	1	0	7	0	3	0	0	0	0	5	2	0	53	191	0	0	0	0	38	1

Screenings Reported by CFC/CPS/DCFS and Screening Tools Utilized / FY2020 Year End

Screening Tool	Total Screened	Ages (in Months)							Not Referred	Total Referred	Screenings of Children involved with DCFS			# of Children Ages 0 to 3 Referred to								# of Children Ages 3 to 5 Referred to							
		0-11	12-23	24-35	36-47	48-60	61+	In Intact Family Services			Children of Teen Wards	In Foster Care	LEA EI	LEA (ECSE)	EHS	PI (center-based)	Child Care Program	Other HV Services	Multiple Services	Rescreening	LEA (ECSE)	PFA	HS	Child Care Program	Other HV Services	Multiple Services	Rescreening		
TPBA	217	0	0	47	114	54	2	31	186	0	0	1	4	0	2	0	0	0	32	6	9	7	132	0	0	0	9	9	6
CFC #17 Child & Family Connections, ROE of Adams/Pike Counties, 510 Maine St, Ste 615, Quincy, IL 62301 - Kara Hoffman																													
ASQ-3	153	22	56	61	14	0	0	151	2	0	0	0	0	0	0	0	0	0	2	0	0	0	2	0	0	0	3	0	0
ASQ:SE	143	19	53	57	14	0	0	141	2	0	0	0	0	0	0	0	0	0	2	0	0	0	2	0	0	0	3	0	0
DIAL	931	0	0	106	407	344	55	764	167	21	0	8	3	0	0	0	0	0	0	0	11	13	0	0	0	0	0	142	
Speed DIAL-4	30	4	8	8	10	0	0	28	2	0	0	0	0	0	0	0	0	0	2	0	0	0	2	0	0	0	3	0	0
CFC #18 Child & Family Connections, Sangamon Co. Public Health Department, 2833 S Grand Ave. E, Springfield, IL 62703 - Lisa McGlothlin																													
ASQ	29	9	9	11	0	0	0	11	18	0	0	0	2	0	0	0	0	17	2	4	1	0	0	0	0	0	0	0	
ASQ-3	30	6	12	9	3	0	0	26	4	1	0	1	3	0	0	0	0	15	0	0	8	0	0	0	4	0	0	3	
ASQ:SE	11	1	4	3	3	0	0	10	1	1	0	1	1	0	0	0	0	0	0	0	0	0	0	0	0	0	0	0	
BRIG	55	0	0	16	31	8	0	0	41	0	0	0	0	0	0	0	0	0	1	0	0	3	41	0	0	0	3	7	
BRIG-2	11	1	4	3	3	0	0	10	1	1	0	1	1	0	0	0	0	0	0	0	0	0	0	0	0	0	0	0	
BRIG-3	9	0	0	0	7	2	0	6	3	0	0	1	0	0	0	0	0	0	0	0	0	0	9	0	0	0	2	3	
CFC #19 Child & Family Connections, Macon Co. Community Mental Health Board, 132 S Water St, Ste 604, Decatur, IL 62523 - Amy Farmer																													
ASQ	139	43	47	49	0	0	0	133	6	13	0	18	6	0	0	0	0	0	0	0	0	0	0	0	0	0	0	0	
ASQ:SE	139	43	47	49	0	0	0	133	6	13	0	18	6	0	0	0	0	0	0	0	0	0	0	0	0	0	0	0	
BRIG	1059	5	11	102	548	222	171	200	859	0	0	0	6	17	0	0	0	0	62	4	3	139	529	8	0	0	144	78	3
HELP	139	43	47	49	0	0	0	133	6	13	0	18	6	0	0	0	0	0	0	0	0	0	0	0	0	0	0	0	
CFC #20 Child & Family Connections, Community Support Systems, 1901 S 4th St, Ste 209, Effingham, IL 62401 - Rita Wahl																													
ASQ	10	0	8	2	0	0	0	5	5	0	0	0	2	0	0	0	0	0	0	0	3	0	0	0	0	0	0	0	
ASQ-3	23	7	10	5	1	0	0	19	4	0	0	2	4	0	0	0	0	0	0	0	0	0	0	0	0	0	0	0	
BRIG	24	0	0	2	17	4	1	0	24	0	0	0	0	1	0	0	0	0	1	0	0	3	19	0	0	0	6	6	0
DAYC-2	4	0	0	1	1	2	0	0	4	0	0	0	0	1	0	0	0	0	0	0	0	3	0	0	0	0	0	0	
DIAL	6	0	0	1	5	0	0	2	2	2	0	1	0	0	0	0	0	0	0	0	1	2	0	0	0	0	0	1	
DIAL-4	36	0	0	0	29	7	0	0	36	0	0	1	0	0	0	0	0	0	0	0	0	0	31	0	0	0	1	0	4
CFC #21 Child & Family Connections, Regional Office of Education #13, 4 Eagle Center, Ste 4, O'Fallon, IL 62269 - Terri Kampwerth																													
ASQ	397	23	35	79	178	81	1	150	251	3	0	4	11	7	0	2	4	17	10	3	3	22	192	9	10	0	5	11	4
ASQ-3	3204	483	573	568	613	758	197	2837	328	18	0	13	68	2	286	0	0	7	10	2	151	107	128	1014	0	0	26	10	118
ASQ:SE	594	72	114	155	173	79	1	283	276	19	0	12	30	8	0	2	4	22	12	3	27	21	184	0	10	0	5	11	3
ASQ:SE-2	319	30	45	77	103	62	2	213	106	0	0	2	9	1	0	0	0	0	8	2	4	32	67	0	0	0	25	10	3

Screenings Reported by CFC/CPS/DCFS and Screening Tools Utilized / FY2020 Year End

Screening Tool	Total Screened	Ages (in Months)							Not Referred	Total Referred	Screenings of Children involved with DCFS			# of Children Ages 0 to 3 Referred to								# of Children Ages 3 to 5 Referred to								
		0-11	12-23	24-35	36-47	48-60	61+	In Intact Family Services			Children of Teen Wards	In Foster Care	LEA EI	LEA (ECSE)	EHS	PI (center-based)	Child Care Program	HV	Other Services	Multiple Services	Rescreening	LEA (ECSE)	PFA	HS	Child Care Program	Other HV Services	Multiple Services	Rescreening		
BRIG	11	0	0	3	5	3	0	0	11	0	0	0	0	1	0	0	1	0	0	1	0	2	8	1	0	0	1	1	0	
BRIG-3	1	0	0	0	1	0	0	0	1	0	0	0	0	0	0	0	0	0	0	0	0	0	1	0	0	0	0	0	0	
DIAL-4	667	26	49	87	297	195	13	307	347	10	0	7	16	1	0	0	0	5	8	2	2	52	294	3	8	0	65	42	13	
ESP	42	0	0	5	27	10	0	0	42	0	0	1	0	1	0	0	0	0	0	0	0	3	38	13	2	0	1	20	4	
Play-Based	74	0	0	18	39	17	0	0	74	0	0	0	0	7	0	0	4	0	4	3	0	7	39	0	10	0	0	0	0	
PLS-5	3	0	0	1	1	1	0	0	3	0	0	0	0	1	0	0	1	0	0	1	0	2	0	1	0	0	1	1	0	
Speed DIAL-4	105	0	0	8	53	44	0	0	58	0	0	4	0	0	0	0	0	0	0	0	3	7	68	9	0	0	3	0	1	
CFC #22 Child & Family Connections, Regional Office of Education #13, 660 W Noleman St, Centralia, IL 62801 - Nicole Van Hise																														
ASQ	127	28	44	54	1	0	0	6	121	0	0	0	0	0	0	0	0	120	0	0	0	0	0	0	0	0	1	0	0	0
ASQ-3	140	31	31	29	26	23	0	61	75	0	0	0	17	0	23	0	10	0	1	11	12	6	0	2	31	0	1	31	31	
BRIG	319	2	4	58	129	110	16	298	21	1	0	22	0	0	1	0	0	0	1	0	0	3	8	0	0	0	3	2	1	
BRIG-3	163	0	1	26	77	57	2	1	162	0	0	0	1	0	0	2	0	0	23	2	3	6	135	1	0	0	2	6	2	
Hearing	184	2	4	58	77	32	11	177	7	0	0	0	0	0	1	0	0	0	1	0	0	0	0	0	0	0	3	2	0	
Speech	184	2	4	58	77	32	11	177	7	0	0	0	0	0	1	0	0	0	1	0	0	0	0	0	0	0	3	2	0	
CFC #23 Child & Family Connections, Wabash & Ohio Valley Special Education Dist., 800 S Division St, Norris City, IL 62869 - Charity Heifner																														
ASQ	894	143	145	140	223	243	0	816	78	0	0	0	9	0	0	0	0	0	12	0	11	3	0	2	0	0	4	0	6	
ASQ-3	148	25	41	50	20	28	3	78	80	0	0	0	16	0	0	0	26	0	0	7	34	2	0	0	42	0	0	2	42	
ASQ:SE-2	2	0	0	1	0	1	0	0	2	0	0	0	0	0	0	0	1	0	0	0	1	0	0	0	1	0	0	0	1	
DIAL-4	1295	93	132	161	529	378	2	766	529	0	0	0	28	0	0	0	0	0	16	2	3	16	429	2	0	0	186	18	37	
Speed DIAL-4	831	93	132	140	223	243	0	766	65	0	0	0	7	0	0	0	0	0	12	0	0	3	0	2	0	0	4	0	6	
CFC #24 Child & Family Connections, Archway, Inc., 2751 W Main, PO Box 1180, Carbondale, IL 62901-1180 - Lindsay Baskin																														
ASQ	384	125	96	122	32	9	0	306	44	1	0	0	0	0	0	35	0	40	0	0	0	0	0	0	0	0	0	0	0	
ASQ-3	155	26	35	39	26	29	0	1	154	0	0	0	6	0	0	0	53	42	5	91	89	3	36	0	20	2	4	34	32	
ASQ:SE	15	1	0	1	6	7	0	0	12	0	0	0	0	0	0	0	0	0	0	0	0	1	0	0	12	0	0	12	12	
ASQ:SE-2	101	19	22	25	15	20	0	1	100	0	0	0	1	0	3	0	15	42	5	53	51	1	35	1	0	2	4	14	12	
BRIG	675	89	78	117	212	169	9	470	171	0	0	3	1	3	4	8	0	32	0	0	0	16	124	3	0	0	1	0	1	
BRIG-3	14	0	0	6	3	4	1	14	0	0	0	0	0	0	0	0	0	0	0	0	0	0	0	0	0	0	0	0	0	
Hearing	263	73	63	92	28	7	0	263	0	0	0	0	0	0	0	0	0	0	0	0	0	0	0	0	0	0	0	0	0	
CFC #25 Child & Family Connections, Options & Advocacy for McHenry Co., 365 Millennium Dr, Ste A, Crystal Lake, IL 60012 - Susan Beckman																														
ASQ	892	194	266	294	81	57	0	86	806	0	0	1	692	0	0	0	0	0	1	0	0	24	79	0	0	2	8	0	0	

Screenings Reported by CFC/CPS/DCFS and Screening Tools Utilized / FY2020 Year End

Screening Tool	Total Screened	Ages (in Months)							Not Referred	Total Referred	Screenings of Children involved with DCFS			# of Children Ages 0 to 3 Referred to								# of Children Ages 3 to 5 Referred to							
		0-11	12-23	24-35	36-47	48-60	61+	In Intact Family Services			Children of Teen Wards	In Foster Care	LEA EI	LEA (ECSE)	PI (center-based)	Child Care Program	HV	Other Services	Multiple Services	Rescreening	LEA (ECSE)	PFA	HS	Child Care Program	Other HV Services	Multiple Services	Rescreening		
		ASQ-3	500	18	32	63	183	204			0	259	241	0	0	2	5	0	0	0	0	0	2	0	0	26	210	0	0
ASQ:SE	189	11	16	58	43	61	0	127	62	0	0	0	5	0	0	0	0	0	0	0	0	24	33	0	0	0	0	0	0
ASQ:SE-2	200	0	0	0	103	97	0	18	182	0	0	1	0	0	0	0	0	0	0	0	0	4	181	0	0	0	3	8	0
CIP	87	0	0	20	47	19	1	17	70	0	1	0	0	0	0	0	0	0	0	0	0	30	39	0	0	0	0	0	1
DIAL-4	257	12	20	56	100	64	5	86	171	0	0	1	7	10	0	0	0	0	1	0	1	44	100	0	0	0	0	0	8
ESP	36	0	0	0	24	12	0	16	20	0	0	1	0	0	0	0	0	0	0	0	0	10	0	0	0	2	8	0	0
PLS	22	2	6	3	10	1	0	0	22	0	0	0	0	0	0	0	0	11	0	0	0	3	11	0	0	0	0	3	0
PRO-3	36	0	0	0	24	12	0	16	20	0	0	1	0	0	0	0	0	0	0	0	0	10	0	0	0	2	8	0	0
SPAT-D II	22	2	6	3	10	1	0	0	22	0	0	0	0	0	0	0	0	11	0	0	0	3	11	0	0	0	0	3	0

Chicago Public Schools, Office of Diverse Learner Supports & Services, 42 W Madison St, 2nd Floor, Chicago, IL 60602 - Dr. Stephanie Jones

ASQ	3002	77	253	523	925	773	449	1852	1150	0	0	13	94	0	0	0	0	0	0	0	171	459	0	0	0	0	0	0	426
ESI-P	3002	77	253	523	925	773	449	1852	1150	0	0	13	94	0	0	0	0	0	0	0	171	459	0	0	0	0	0	0	426
ESI-R	3002	77	253	523	925	773	449	1852	1150	0	0	13	94	0	0	0	0	0	0	0	171	459	0	0	0	0	0	0	426

DCFS/Erikson Institute Statewide, 451 North LaSalle Street, Chicago, IL 60654 - Andria Goss

ASQ	417	148	134	92	38	5	0	0	417	400	0	0	158	5	135	0	55	229	87	0	107	17	0	26	4	14	28	0	4
ASQ:SE	417	148	134	92	38	5	0	0	417	400	0	0	158	5	135	0	55	229	87	0	107	17	0	26	4	14	28	0	4
ESI-P	417	148	134	92	38	5	0	0	417	400	0	0	158	5	135	0	55	229	87	0	107	17	0	26	4	14	28	0	4